



# CUMBERLAND UNIVERSITY

2014-15 BULLDOG MEN'S BASKETBALL

## 3 NAIA National Tournament Appearances (2004, 2008, 2009)

Cumberland Sports Information • One Cumberland Square • Lebanon, Tenn. 37132 • Fax (615) 443-8422

Jo Jo Freeman, Sports Information Director • (615) 547-1350 • Email - jfreeman@cumberland.edu

### 2014-15 SCHEDULE/RESULTS

Overall Record: 6-11, 2-3 Mid-South

Date Opponent Results

#### November

5 Indiana Univ.-Southeast . . . . . L, 92-80  
 6 at Fisk Univ. . . . . W, 83-70  
 8 at Oakwood Univ. . . . . W, 66-64  
 11 Oakwood Univ. . . . . W, 74-63  
 15 Life Univ.\* . . . . . L, 87-70  
 17 Freed-Hardeman. . . . . L, 81-66  
 20 at #8 Georgetown College\* . . . . . L, 74-54  
 22 at Shawnee State\* . . . . . W, 60-58  
 24 Martin Methodist. . . . . L, 66-64

#### December

4 St. Catharine College\* . . . . . W, 74-68  
 6 #19 Campbellsville Univ.\* . . . . . L, 73-59  
 13 at Bethel Univ. . . . . L, 65-63  
 17 at #8 Martin Methodist . . . . . L, 59-52  
 19 at Dalton State College\$ . . . . . L, 53-47  
 20 vs. Concordia College-Selma\$. . . . . L, 51-48

#### January

3 at Indiana Univ.-Southeast . . . . . W, 69-53  
 12 at #6 Freed-Hardeman . . . . . L, 67-59  
 15 at Univ. of Cumberlands\* . . . . . 7 PM  
 17 at Univ. of Pikeville\* . . . . . 1 PM  
 22 at Lindsey Wilson . . . . . 8 PM  
 24 Fisk Univ. . . . . 4 PM  
 29 Univ. of Pikeville\* . . . . . 8 PM  
 31 Univ. of Cumberlands\* . . . . . 4 PM

#### February

5 at St. Catharine College\* . . . . . 7 PM  
 7 at Campbellsville Univ.\* . . . . . 3 PM  
 12 Shawnee State\* . . . . . 8 PM  
 14 Georgetown College\* . . . . . 4 PM  
 19 at Life Univ.\* . . . . . 6:30 PM  
 26 Lindsey Wilson\* . . . . . 8 PM

#### March

6-8 Mid-South Conference Championships#

\* - Mid-South Conference Game  
 \$ - Roadrunner Booster Club Classic, Dalton, Ga.  
 # - Frankfort, Ky.

### Cumberland Bulldogs vs. Univ. of the Cumberlands (14-4, 3-2)

Probable Starters	Ht.	Wt.	Cl.	PPG	RPG	APG	SPG	BLK
G 2 Telvin Wilkerson	6-2	216	JR	7.1	3.2	1.3	0.7	0.3
G 3 Alex Flagler	5-9	158	r-JR	6.5	2.2	1.8	1.9	0.0
G 5 Josh Wilkerson	6-0	167	SR	12.5	2.4	1.8	1.1	0.0
F 24 DeMario Frazier	6-5	217	SR	8.5	6.6	0.9	0.8	0.1
C 23 Uros Benacek	6-10	275	SO	5.1	2.2	0.2	0.2	0.4

#### Off The Bench

G 20 Jerrod Gaston	6-1	182	SR	7.1	2.8	1.5	0.7	0.1
G 4 Marquel Hickerson	6-2	197	SO	7.7	2.7	1.5	1.4	0.2
G 14 Cameron Prather	5-8	156	r-JR	5.4	1.6	0.5	0.8	0.0
G 11 Tylor Owens	5-9	171	JR	4.2	1.8	1.7	1.3	0.0
F 12 DeQuan Bond	6-5	197	SO	3.3	2.8	0.3	0.6	0.3
F 21 Paul Williams	6-4	200	r-JR	4.0	2.6	0.5	0.7	0.5
F 15 Moritz Dern	6-5	214	SR	3.2	3.4	0.2	0.2	0.4

#### Bulldogs fall short in close games


Cumberland has lost seven of its last nine contests in 2014-15, with six of those defeats by eight points or less. The six losses have come by a grand total of 28 points. The Bulldogs dropped a pair of games to Martin Methodist – 66-64 in Lebanon and 59-52 in Pulaski – as well as a two-point loss at Bethel University on a last-second shot. CU lost 53-47 at Dalton State College and 51-48 to Concordia College-Selma (also in Dalton) just before Christmas and dropped a 67-59 decision this past Monday at Freed-Hardeman.

#### Poor starts also leading to losses

Three times in the last four games Cumberland has fallen behind by double figures in the first half thanks to poor shooting and sometimes bad decisions. The Bulldogs trailed 16-0 and 18-2 at Dalton State College, missing its first nine shots and committing seven turnovers. CU trailed by three at the half thanks to a pair of runs and got as close as one midway through the second period before losing by six. Cumberland trailed 9-0 against Concordia-Selma, going 0-for-4 with three turnovers in the first four minutes of the contest, and 28 percent shooting put the club down 15 points late in the opening half. CCAL led by 15 again early in the second period before CU finished the game with a 21-4 spurt, falling by three. In Monday's loss at Freed-Hardeman, the Bulldogs made just 2-of-14 shots from the field and committed six turnovers in the first 11 minutes of the contest, allowing the Lions to take a 17-point advantage. CU's 13-3 spurt cut into the deficit but the club still trailed by 12 at the break. Cumberland pulled within six with just over two minutes to play, but that was as close as they would get in an eight-point defeat.

#### Williams enjoys two best games of season

Redshirt junior Paul Williams posted perhaps his best two games of the season this month for the Bulldogs, scoring in double figures for the first time this season in both outings. The North Chicago, Ill., native posted 10 points and six rebounds at Indiana-Southeast on January 3 and followed that with 11 points and six boards this past Monday at Freed-Hardeman. He combined to make 6-of-14 shots and was a perfect 9-for-9 at the foul line in the two outings, which were also the first two starts of the season for Williams, who missed all of 2013-14 with a knee injury. He scored eight points ver-



**Tip Time:** 8 PM ET  
**Radio:** GoCumberlandAthletics.com  
**Video:** CumberlandsPatriots.com

**Series Record:**  
 Cumberlands leads 10-2 since 2000  
**Last Meeting:** Cumberlands won 61-58 in Williamsburg (02/20/14)

**Head Coaches:**  
 CU - Lonnie Thompson, 206-172 at CU (13th season), 0-6 vs. UC  
 UC - Donnie Butcher, 300-142 at UC (15th season), 10-2 vs. CU

## QUICK FACTS

Location . . . . . Lebanon, Tenn.  
 Enrollment . . . . . 1,491  
 Founded . . . . . 1842  
 Nickname . . . . . Bulldogs  
 Colors . . . . . Cardinal and White  
 President . . . . . Dr. Harvill Eaton  
 Director of Athletics . . . . . Ron Pavan  
 Associate Athletic Director . . . . . Mitch Walters  
 Athletics Phone . . . . . 615/547-1348  
 Web Site . . . . . GoCumberlandAthletics.com  
 Conference . . . . . Mid-South  
 Home Court . . . . . Dallas Floyd Gymnasium (2,000)

## MEDIA RELATIONS

Director . . . . . Jo Jo Freeman  
 Freeman's e-mail . . . . . jfreeman@cumberland.edu  
 Freeman's Office Phone . . . . . 615/547-1350  
 Freeman's Cell Phone . . . . . 615/631-9522  
 Media Relations Fax . . . . . 615/443-8422

## COACHING STAFF

Head Coach . . . . . Lonnie Thompson  
 Alma Mater . . . . . Middle Tennessee, 1986  
 Record at CU . . . . . 204-166 (12 Seasons)  
 Career Record . . . . . 280-209 (16 Seasons)  
 Basketball Office Phone . . . . . 615/547-1345  
 Assistant Coach . . . . . Lindal Yarbrough  
 Assistant Coach . . . . . Thurman Tucker  
 Graduate Assistant . . . . . Nicole Gardner  
 Athletic Trainer . . . . . Megan Bynum

## TEAM INFORMATION

2013-14 Record . . . . . 14-13  
 2013-14 MSC Record/Finish . . . . . 6-12/9th  
 2013-14 Postseason . . . . . None  
 Letterwinners Returning/Lost . . . . . 7/6  
 Starters Returning/Lost . . . . . 2/3

## PRONUNCIATIONS

Uros Benacek . . . . . YOUR-ohsh BEN-uh-chik  
 DeQuan Bond . . . . . duh-KWON  
 Moritz Dern . . . . . MORE-its DERN  
 Jerrod Gaston . . . . . juh-ROD  
 Marquel Hickerson . . . . . MAR-kwel

sus Campbellsville University in early December but did not score in the next three outings, playing just 16 total minutes in the three games. He is averaging 4.0 points and 2.6 rebounds in 14.5 minutes per game this season.

### Bulldogs continue road swing

Cumberland finishes a nine-game road swing with three straight Mid-South Conference games, the first on Thursday at the University of the Cumberlands. The Bulldogs have enjoyed very little success against the Patriots through the years and are just 2-10 against current UC head coach Donnie Butcher, who took over the program at the start of the 2000-01 campaign. CU won the first meeting against Butcher, 68-65, in Lebanon, but lost the next six and have dropped the last four in the series, with those four meetings decided by a total of 16 points. UC won both contests last season by three points, the first one in overtime in Lebanon. Cumberland has not won in Williamsburg with Butcher as head coach, going 0-6.

Date	Place	Score
01/18/01	Lebanon	W, 68-65
02/24/01	Williamsburg, Ky.	L, 62-60
01/10/02	Lebanon	L, 66-65
02/09/02	Williamsburg, Ky.	L, 82-74
11/16/02	Williamsburg, Ky.	L, 96-84
12/05/02	Williamsburg, Ky.	L, 66-54
01/18/03	Lebanon	L, 75-65
12/01/07	Lebanon	W, 69-62
11/20/12	Williamsburg, Ky.	L, 69-62
02/25/13	Lebanon	L, 75-72
01/25/14	Lebanon	L, 55-52 (OT)
02/20/14	Williamsburg, Ky.	L, 61-58

### J. Wilkerson team's most consistent scorer

Senior Josh Wilkerson has been the team's most consistent performer so far in 2014-15 and is the only Bulldog player averaging in double figures. The Memphis, Tenn., native has scored in double figures in 13 of the club's 17 outings and netted nine points in two others. He is shooting 39 percent (24-for-62) from 3-point range this season with five contests with three trifectas, including versus Indiana-Southeast,

## BY THE NUMBERS

CU	Stat	UC
63.9	Points	71.8
35.8	Rebounds	35.8
10.0	Assists	13.8
8.4	Steals	5.4
1.9	Blocks	2.6
.405	Field Goal Percentage	.448
.327	3-Point Percentage	.381
.710	Free Throw Percentage	.698
16.6	Turnovers	13.5

Shawnee State, Martin Methodist, Dalton State College and Concordia-Selma. Wilkerson posted 19 points versus Freed-Hardeman, 20 in the first meeting with Martin Methodist, 18 against St. Catharine College and 17 at Indiana-Southeast. He also leads the club with 1.82 assists per game and has the second-most steals on the team this season with 18 while averaging 12.5 points per outing.

### Flagler finds scoring touch

Redshirt junior Alex Flagler has posted an up-and-down season to this point, scoring in double figures just three times and committing more turnovers than assists from the point guard position. The Atlanta, Ga., native netted 17 points with a pair of 3-pointers, four assists and five steals in the season-opener versus Indiana-Southeast and followed that with nine points and four steals at Fisk University but had not hit double-digits in any other contest this season and scored more than seven just once (nine versus Martin Methodist) before the last two games. He hit a pair of trifectas and finished with 16 points and five steals at Indiana-Southeast before adding 11 points with four assists on Monday at Freed-Hardeman. For the season Flagler is averaging 6.5 points and 1.8 assists per game.

### Frazier's numbers fall off

Senior DeMario Frazier started quickly this

## A QUICK LOOK AT BULLDOG BASKETBALL

No.	Name	Pos.	Ht.	Wt.	Cl.	Hometown/HS/JC/Transfer	Notes
1	Garrett Kirkland	G	6-1	146	r-FR	Carbon Hill, Ala./Carbon Hill HS	Backup point guard, redshirted in 2013-14
2	Telvin Wilkerson	G	6-2	216	JR	Memphis, Tenn./Melrose HS (Northwest Florida State College)	Slashing guard, streaky scorer
3	Alex Flagler	G	5-9	158	r-JR	Atlanta, Ga./Buford HS (Coker College)	Starting point guard, sometimes out of control
4	Marquel Hickerson	G	6-2	197	SO	Tullahoma, Tenn./Tullahoma HS	Excellent scorer, battling knee issues
5	Josh Wilkerson	G	6-0	167	SR	Memphis, Tenn./Memphis Catholic HS (Southwest Tennessee CC)	Consistent player, improved outside shot
11	Tylor Owens	G	5-9	171	JR	Carbon Hill, Ala./Carbon Hill HS (Southern Union State CC)	Good penetrator but turnover prone
12	DeQuan Bond	G	6-5	197	SO	Antioch, Tenn./Cane Ridge HS	Tweener, good rebounder, shot needs work
14	Cameron Prather	G	5-8	156	r-JR	Nashville, Tenn./Whites Creek HS	Backup point guard, good ball handler
15	Moritz Dern	F	6-5	214	SR	Marburg, Germany/Urspringschule	Backup forward, good midrange jumper
20	Jerrod Gaston	G	6-1	182	SR	Murphysboro, Ill./Murphysboro HS (Pittsburg State)	Good scorer and rebounder, has played PG
21	Paul Williams	G	6-4	200	r-JR	North Chicago, Ill./Zion-Benton Township HS (Volunteer State CC)	Redshirted last season, still getting into form
23	Uros Benacek	C	6-10	275	SO	Maribor, Slovenia/COP Nymburk (Columbia State CC)	European player, more shooter than banger
24	DeMario Frazier	F	6-5	217	SR	Murfreesboro, Tenn./Oakland HS (Chattahoochee Valley CC)	Team's most consistent performer in 2014-15

Head Coach: Lonnie Thompson

Assistant Coaches: Lindal Yarbrough, Thurman Tucker, Nicole Gardner

## 2014-15 STARTING LINEUPS

Opponent	Game-by-Game Starters					Result
Indiana Univ.-Southeast	T. Wilkerson	Flagler	J. Wilkerson	Frazier	Dern	L, 92-80
Fisk Univ.	T. Wilkerson	Flagler	J. Wilkerson	Frazier	Dern	W, 83-70
Oakwood Univ.	T. Wilkerson	Flagler	J. Wilkerson	Frazier	Dern	W, 66-64
Oakwood Univ.	T. Wilkerson	Prather	Gaston	Frazier	Benacek	W, 74-63
Life Univ.	T. Wilkerson	Owens	J. Wilkerson	Frazier	Benacek	L, 87-70
Freed-Hardeman	T. Wilkerson	Gaston	J. Wilkerson	Frazier	Benacek	L, 81-66
Georgetown College	T. Wilkerson	Gaston	J. Wilkerson	Frazier	Benacek	L, 74-54
Shawnee State	T. Wilkerson	Owens	J. Wilkerson	Frazier	Benacek	W, 60-58
Martin Methodist	T. Wilkerson	Flagler	J. Wilkerson	Frazier	Benacek	L, 66-64
St. Catharine College	T. Wilkerson	Hickerson	J. Wilkerson	Frazier	Benacek	W, 74-68
Campbellsville Univ.	Hickerson	J. Wilkerson	Bond	Frazier	Benacek	L, 73-59
Bethel Univ.	T. Wilkerson	Hickerson	J. Wilkerson	Frazier	Dern	L, 65-63
Martin Methodist	T. Wilkerson	Hickerson	J. Wilkerson	Frazier	Dern	L, 59-52
Dalton State College	T. Wilkerson	Hickerson	J. Wilkerson	Frazier	Dern	L, 53-47
Concordia Univ.-Selma	T. Wilkerson	Hickerson	J. Wilkerson	Frazier	Dern	L, 51-48
Indiana Univ.-Southeast	Flagler	Prather	Bond	Frazier	Benacek	W, 69-53
Freed-Hardeman	Flagler	Prather	Bond	Williams	Benacek	L, 67-59
Univ. of Cumberland						
Univ. of Pikeville						
Lindsey Wilson						
Fisk Univ.						
Univ. of Pikeville						
Univ. of Cumberland						
St. Catharine College						
Campbellsville Univ.						
Shawnee State						
Georgetown College						
Life Univ.						
Lindsey Wilson						

season, netting double figures in five of the first seven games and 7-of-12 contests through December 13, but the Murfreesboro, Tenn., native has scored just 23 combined points in the last five outings, losing his starting spot in the process. He posted 12 points against Indiana-Southeast and Fisk University to start the year and registered a season-high 22 points versus Life University as well as 18 points at Georgetown College. Frazier was averaging 12.9 points per game at that point of the year, but since then has netted only 5.4 points in the last 10 outings. Even his rebounding numbers have taken a tumble in recent outings, with eight contests of seven or more rebounds in the first 13 games of the year (including 12 versus IUS and 11 against Oakwood) but only 19 total boards in the last four contests. He is averaging 8.5 points and 6.6 rebounds per game this season, leading the club in rebounding and ranking second in scoring.

### *T. Wilkerson hopefully back on track*

Junior guard Telvin Wilkerson was brought into the program to be a primary scorer but his inability to knock down shots has not allowed him to fill that role so far this season. The Memphis, Tenn., native scored in double figures just once in the first six games of the season, but he averaged 9.8 points with three double-digit outings between November 20 and December 13. He netted 10 points at Georgetown College, scored a season-best 19 points versus Martin Methodist and added 11 points at Bethel University.

Wilkerson's inconsistency showed again in the next four outings, as he posted a combined 12 points while hitting only 5-of-23 shots from the floor. He is shooting just 34 percent from the field this season despite taking a large amount of good shots, driving to the basket but fading away on the 15-to-18 footers. Hopefully his showing this past Monday at Freed-Hardeman will get him back on track and more consistent. Wilkerson hit a pair of 3-pointers and was 4-for-8 overall in the game, registering a team-best 12 points. He is averaging 7.1 points and 3.2 rebounds per game in 27.3 minutes per contest this season.

### *Bulldogs plagued by turnovers*

Cumberland ranks 69th out of 96 schools nationally in turnover margin through 17 games this season, with CU committing 16.6 miscues per contest. Opponents have scored 279 points in 16 outings (data not available for game at Oakwood), and average of 17.4 per contest. Life University netted 31 points on 25 Bulldog turnovers and five other teams posted more than 20 points off Cumberland miscues. CU's early-season M-O was a good first half and a few good minutes in the second half before the opponent took advantage of a string of turnovers and missed shots to take control of the game. Four of the club's five losses in November followed that pattern. Over the last four weeks Cumberland has gotten off to several terrible starts shooting and with turnovers, falling into big holes before fighting back and then falling

## MEDIA INFORMATION

### **Bulldogs on the Radio**

■ All Mid-South Conference and postseason basketball games may be heard at [GoCumberlandAthletics.com](http://GoCumberlandAthletics.com). Jon Boyce begins his fourth season at CU, handling play-by-play duties for the first time in 2014-15.

### **Interview Protocol**

■ After a 10-minute cooling off period, requested players and head coach Lonnie Thompson will be available for members of the media. The Bulldog locker room is **CLOSED** both at home and on the road. At home, the interview area is located just off the southwest corner of the playing floor. On the road, requested players and Coach Thompson will be brought to an area designated by the home team. Player requests should be directed to Sports Information Director Jo Jo Freeman.

### **Credentials**

■ Arrangement for media credentials for the 2014-15 basketball season should be directed to the Sports Information Office. Requests by accredited media members should be made in writing and submitted on company letterhead to Jo Jo Freeman. Priority issuance of credentials will be given to daily newspapers and television stations that cover Cumberland basketball on a regular basis. Other credential requests will be fulfilled on a space available basis.

### **GoCumberlandAthletics.com**

■ Cumberland basketball statistics and notes are available 24 hours a day, seven days a week at [GoCumberlandAthletics.com](http://GoCumberlandAthletics.com). Media are invited to use the official web site for Cumberland athletics for information regarding all Bulldog athletic teams.

short at the end. The Bulldogs have averaged just 14.0 turnovers over the last 10 contests with just one outing over 15 miscues (21 at Indiana-Southeast on Jan. 3).

### *Gaston's versatility missing with injuries*

Senior Jerrod Gaston played all three guard spots in the first seven games of the season, starting three contests and scoring 10.0 points per game. The Murphrysboro, Ill., native netted double figures in the first three contests of the year, scoring 15 points against Indiana-Southeast, 16 at Fisk University and 13 at Oakwood University, and recorded 10 points against Freed-Hardeman. He added eight points at home versus Oakwood grabbed six rebounds at Fisk and at Georgetown College. He missed three games in late November and early December with a knee injury and has not been the same player since returning, averaging just 3.7 points on 24 percent shooting (5-for-21) from the field. His only outing with more than five points since Dec. 6 was eight points at Martin

## 2014-15 Mid-South Conference Standings

(as of Jan. 14, 2014)

School	Overall	Pct.	TSAC	Pct.
Campbellsville Univ.	18-1	.947	5-0	1.000
Univ. of Pikeville	15-1	.938	4-1	.800
Life Univ.	9-5	.643	3-1	.750
Georgetown College	14-3	.824	3-2	.600
Univ. of Cumberlands	14-4	.778	3-2	.600
Cumberland Univ.	6-11	.353	2-3	.400
Lindsey Wilson	10-8	.556	1-4	.200
St. Catharine College	5-10	.333	1-4	.200
Shawnee State	6-9	.400	0-5	.000

### SCHEDULE/RESULTS

#### JANUARY 10

St. Catharine College 88, Tennessee Wesleyan 84  
Univ. of Cumberlands 79, Point Univ. 38  
Univ. of Pikeville 98, Carlow Univ. 49  
Lindsey Wilson 85, Fisk Univ. 63

#### JANUARY 12

St. Catharine College 87, Tennessee Wesleyan 69  
Campbellsville Univ. 82, Fisk Univ. 64  
Freed-Hardeman 67, Cumberland Univ. 59

#### JANUARY 15

Lindsey Wilson at Univ. of Pikeville . . . . . 7 PM  
Cumberland Univ. at Univ. of Cumberlands . . . 7 PM  
Georgetown College at Shawnee State . . . . . 7 PM  
Life Univ. at Campbellsville Univ. . . . . . 7 PM

#### JANUARY 17

Lindsey Wilson at Univ. of Cumberlands . . . . . 3 PM  
Life Univ. at St. Catharine College . . . . . 3 PM  
Cumberland Univ. at Univ. of Pikeville . . . . . 3 PM

#### JANUARY 18

Ohio State Univ.-Mansfield at Univ. of Pikeville 1 PM

#### JANUARY 22

Ohio Christian Univ. at Univ. of Pikeville. . . . . 1 PM  
Campbellsville Univ. at Georgetown College . . 7 PM  
Life Univ. at Univ. of Cumberlands . . . . . 7 PM  
St. Catharine College at Shawnee State . . . . . 7 PM  
Cumberland Univ. at Lindsey Wilson . . . . . 8 PM

#### JANUARY 24

Campbellsville Univ. at Shawnee State . . . . . 3 PM  
Life Univ. at Univ. of Pikeville . . . . . 3 PM  
St. Catharine College at Georgetown College . 3 PM  
Fisk Univ. at Cumberland Univ. . . . . . 4 PM

#### JANUARY 27

Georgetown College at West Virginia Tech . . . 6 PM

#### JANUARY 29

St. Catharine College at Life Univ. . . . . . 6:30 PM  
Shawnee State at Univ. of Rio Grande. . . . . 7 PM  
Univ. of Cumberlands at Lindsey Wilson . . . . . 8 PM  
Cumberland Univ. at Univ. of Pikeville . . . . . 8 PM

#### JANUARY 31

Campbellsville Univ. at Life Univ. . . . . . 3 PM  
Shawnee State at Georgetown College . . . . . 3 PM  
Univ. of Pikeville at Lindsey Wilson . . . . . 4 PM

## TRACKING THE BULLDOGS

Opponent	Largest Lead	Largest Deficit	Best Run	Opp. Run	Opp. TO	Pts. Off. TO	Record
Indiana U.-Southeast	9	14	9-2	19-1	18	16	0-1
Fisk Univ.	15	1	12-3	10-2	19	20	1-1
Oakwood Univ.			NA				2-1
Oakwood Univ.	23	4	17-0	14-4	26	24	3-1
Life Univ.	4	24	17-5	19-5	26	22	3-2, 0-1
Freed-Hardeman	0	17	13-7	15-4	8	4	3-3
Georgetown College	5	22	12-7	16-4	16	16	3-4, 0-2
Shawnee State	9	7	13-2	12-5	12	12	4-4, 1-2
Martin Methodist	14	7	19-5	19-7	12	16	4-5
St. Catharine College	18	0	22-5	16-9	15	20	5-5, 2-2
Campbellsville Univ.	0	29	15-2	27-14	4	2	5-6, 2-3
Bethel Univ.	15	4	12-2	14-2	7	7	5-7
Martin Methodist	7	10	9-0	19-2	15	16	5-8
Dalton State College	0	16	13-4	16-0	14	8	5-9
Concordia-Selma	2	15	21-4	9-0	13	6	5-10
Indiana U.-Southeast	9	2	10-1	7-0	9	4	6-10
Freed-Hardeman	0	17	13-3	24-7	16	13	6-11
Univ. of Cumberlands							
Univ. of Pikeville							
Lindsey Wilson							
Fisk Univ.							
Univ. of Pikeville							
Univ. of Cumberlands							
St. Catharine College							
Campbellsville Univ.							
Shawnee State							
Georgetown College							
Life Univ.							
Lindsey Wilson							

Methodist. Gaston is averaging 7.1 points and 2.8 rebounds per game this season in 13 contests, playing 18.2 minutes per game.

### Men's basketball selected eighth in MSC Coaches' Poll

Cumberland was picked eighth in the Mid-South Conference Men's Basketball Preseason Coaches' Poll announced in early November by the league office. The Bulldogs and 13th-year head coach Lonnie Thompson return seven letterwinners along with two redshirts from last season's squad that finished 14-13 overall. Sophomore Marquel Hickerson started 20 contests and senior Josh Wilkerson had 15 starts while senior Moritz Dern and sophomore De-Quan Bond each collected 12 starts last year. The University of Pikeville was the preseason favorite according to the coaches, receiving three first-place votes and 58 total points. Georgetown College got two first-place votes and 54 total points, while Campbellsville University also received three first-place votes and 52 points for third place. The University of the Cumberlands was selected fourth and Lindsey Wilson was fifth, picking up the remaining first-place vote. Newcomer Life University was sixth, followed by St. Catharine College, Cumberland and Shawnee State.

### 2014-15 Mid-South Conference Preseason Coaches' Poll

1. Univ. of Pikeville (3) . . . . . 54
2. Georgetown College (2) . . . . . 54
3. Campbellsville Univ. (3) . . . . . 52
4. Univ. of the Cumberlands . . . . . 43
5. Lindsey Wilson (1) . . . . . 35
6. Life Univ. . . . . 30
7. St. Catharine College . . . . . 29
8. Cumberland Univ. . . . . 15
9. Shawnee State . . . . . 8

# Head Coach Lonnie Thompson



Cumberland's Lonnie Thompson begins his 13th season with the Bulldogs and his 17th as a head coach. The Bulldogs posted a 14-13 mark last season with a roster that included 10

newcomers.

Thompson's program has enjoyed unprecedented success, with three national tournament appearances – the only appearances in school history. Five years ago the Bulldogs made their second consecutive trip to Kansas City, becoming the first squad from CU with back-to-back national tournament appearances.

The Woodbury, Ga., native has posted a 204-166 mark at Cumberland with one TranSouth Conference regular season championship and is 280-209 overall as a head coach. Thompson posted his 200th career head coaching victory on February 19, 2009, against Lambuth University in just his 11th year as a head coach.

Thompson came to CU from Motlow State Community College in Tullahoma, Tenn., where he led the Bucks to back-to-back TJC-CAA Eastern Division Championships. He was named TJCCAA Eastern Division Coach of the Year three times at Motlow State and was the unanimous selection for 2004 TranSouth Coach



of the Year in just his second season in the conference.

That season, he led the Bulldogs to the most wins in school history with a 28-6 record. The 2004 season also saw Thompson capture his 100th career victory as a head coach en route to leading the Bulldogs to the first TranSouth Conference Championship in school history. The program also made the school's first-ever appearance at the NAIA National Tournament in Kansas City, Mo., where they were defeated in the Round of 16.

Cumberland posted a 21-12 overall mark in 2007-08 and made its second appearance in the NAIA National Tournament, falling to Oklahoma City in the first round.

Thompson has a depth of coaching experience at all levels of college basketball, serving as an assistant coach at South Alabama, Middle Tennessee, Tennessee State, Creighton and



Odessa Junior College, where he coached former NBA All-Star Larry Johnson.

Lonnie and his wife, Felicia, have two sons, Destin and Darius, and one daughter, Devin, and the family resides in Murfreesboro, Tenn. Thompson received his bachelor's from Middle Tennessee in 1986 and returned to his alma mater as an assistant coach under David Farrar in the mid-90's.

## Thompson's Career Coaching Year-by-Year

Year	Position	School	Record	Postseason
2013-14	Head Coach	Cumberland Univ.	14-13	
2012-13	Head Coach	Cumberland Univ.	9-20	
2011-12	Head Coach	Cumberland Univ.	22-9	
2010-11	Head Coach	Cumberland Univ.	18-12	
2009-10	Head Coach	Cumberland Univ.	12-17	
2008-09	Head Coach	Cumberland Univ.	25-6	NAIA National Tournament
2007-08	Head Coach	Cumberland Univ.	21-12	NAIA National Tournament
2006-07	Head Coach	Cumberland Univ.	15-15	
2005-06	Head Coach	Cumberland Univ.	7-23	
2004-05	Head Coach	Cumberland Univ.	18-15	
2003-04	Head Coach	Cumberland Univ.	28-6	NAIA National Tournament
2002-03	Head Coach	Cumberland Univ.	15-18	
2001-02	Head Coach	Motlow State CC	25-5	
2000-01	Head Coach	Motlow State CC	23-9	
1999-00	Head Coach	Motlow State CC	12-15	
1998-99	Head Coach	Motlow State CC	14-14	
1997-98	Assistant Coach	Tennessee State	13-16	
1995-96	Assistant Coach	Middle Tennessee	15-12	
1994-95	Assistant Coach	Middle Tennessee	12-15	
1993-94	Assistant Coach	Creighton	7-22	
1992-93	Assistant Coach	Creighton	8-18	
1991-92	Assistant Coach	Creighton	9-19	
1990-91	Assistant Coach	Odessa JC	23-10	
1989-90	Assistant Coach	Odessa JC	34-5	NJCAA National Tournament
1988-89	Assistant Coach	Odessa JC	33-2	
1987-88	Assistant Coach	South Alabama	15-14	
1986-87	Graduate Assistant	West Va. Wesleyan	20-9	

# #1 Garrett Kirkland • r-Freshman • Guard • Carbon Hill, Ala.



## Kirkland's 2014-15 Game-by-Game

	DATE	GS	MIN	FG-A	3FG-A	FT-A	O-D-T	PF	A	TO	BLK	S	PTS
INDIANA-SOUTHEAST	11/05/14					DNP							
at Fisk Univ.	11/06/14					DNP							
at Oakwood Univ.	11/08/14					DNP							
OAKWOOD UNIV.	11/11/14		10	1-2	0-0	0-0	1-0-1	0	0	1	0	0	2
LIFE UNIVERSITY	11/15/14		3	1-1	0-0	0-0	0-0-0	1	1	0	0	0	2
FREED-HARDEMAN	11/17/14					DNP							
at Georgetown College	11/20/14					DNP							
at Shawnee State	11/22/14					DNP							
MARTIN METHODIST	11/24/14					DNP							
ST. CATHARINE COLL.	12/04/14					DNP							
CAMPBELLVILLE UNIV.	12/06/14		11	0-2	0-0	0-0	0-4-4	0	0	1	0	0	0
at Bethel Univ.	12/13/14					DNP							
at Martin Methodist	12/17/14					DNP							
at Dalton State	12/19/14					DNP							
vs. Concordia-Selma	12/20/14		11	0-1	0-0	0-0	0-0-0	1	1	0	0	0	0
at Indiana-Southeast	01/03/15		11	0-0	0-0	0-0	2-1-3	0	0	2	0	0	0
at Freed-Hardeman	01/12/15		7	0-2	0-2	0-0	0-0-0	1	0	0	0	0	0

### Career Highs

Points: 2, 2x, last vs. Life Univ. (11/15/14)  
 Rebounds: 4, vs. Campbellville Univ. (12/06/14)  
 FG Made: 1, 2x, last vs. Life Univ. (11/15/14)  
 FG Att.: 2, 3x, last at Freed-Hardeman (01/12/15)  
 3-FG Made: 0  
 3-Pt. FG Att.: 2, at Freed-Hardeman (01/12/15)  
 FT Made: 0  
 FT Attempts: 0  
 Assists: 1, 2x, last vs. Concordia-Selma (12/20/14)  
 Steals: 0  
 Minutes: 11, 3x, last at Indiana-Southeast (01/03/15)

#### Miscellaneous

Double Figure Scoring Games . . . . . 0  
 Double Figure Rebound Games . . . . . 0  
 Double-Doubles . . . . . 0  
 Games Led CU in Scoring . . . . . 0  
 Games Led CU in Rebounding . . . . . 0  
 Games With 20+ Points . . . . . 0

### Season Highs

Points: 2, 2x, last vs. Life Univ. (11/15/14)  
 Rebounds: 4, vs. Campbellville Univ. (12/06/14)  
 FG Made: 1, 2x, last vs. Life Univ. (11/15/14)  
 FG Att.: 2, 3x, last at Freed-Hardeman (01/12/15)  
 3-FG Made: 0  
 3-Pt. FG Att.: 2, at Freed-Hardeman (01/12/15)  
 FT Made: 0  
 FT Attempts: 0  
 Assists: 1, 2x, last vs. Concordia-Selma (12/20/14)  
 Steals: 0  
 Minutes: 11, 3x, last at Indiana-Southeast (01/03/15)

#### Miscellaneous

Double Figure Scoring Games . . . . . 0  
 Double Figure Rebound Games . . . . . 0  
 Double-Doubles . . . . . 0  
 Games Led CU in Scoring . . . . . 0  
 Games Led CU in Rebounding . . . . . 0  
 Games With 20+ Points . . . . . 0

### KIRKLAND'S CAREER STATISTICS

Year	GP-GS	Min	Avg	FG-A	Pct	3FG-A	Pct	FT-A	Pct	Off-Def-Tot	Avg	PF-FO	A	TO	Blk	Stl	Pts	Avg
2014-15	6-0	53	8.8	2-8	.250	0-2	.000	0-0	.000	3-5-8	1.3	3-0	2	4	0	0	4	0.7

# #2 Telvin Wilkerson • Junior • Guard • Memphis, Tenn.



## T. Wilkerson's 2014-15 Game-by-Game

	DATE	GS	MIN	FG-A	3FG-A	FT-A	O-D-T	PF	A	TO	BLK	S	PTS
INDIANA-SOUTHEAST	11/05/14	*	26	2-9	1-1	2-4	0-2-2	3	2	1	1	1	7
at Fisk Univ.	11/06/14	*	28	4-11	1-2	1-2	2-3-5	2	2	5	0	1	10
at Oakwood Univ.	11/08/14	*	22	1-3	0-1	2-2	1-4-5	4	0	1	1	0	4
OAKWOOD UNIV.	11/11/14	*	16	3-6	1-2	1-1	0-2-2	3	1	5	0	0	8
LIFE UNIVERSITY	11/15/14	*	33	2-6	0-1	0-0	0-3-3	1	0	0	0	1	4
FREED-HARDEMAN	11/17/14	*	33	2-9	0-1	4-4	1-2-3	4	1	4	1	1	8
at Georgetown College	11/20/14	*	35	4-10	2-3	0-2	2-1-3	1	0	4	0	3	10
at Shawnee State	11/22/14	*	33	4-11	1-3	0-1	1-0-1	0	4	2	0	0	9
MARTIN METHODIST	11/24/14	*	37	7-14	2-3	3-6	2-4-6	4	3	2	0	2	19
ST. CATHARINE COLL.	12/04/14	*	22	0-5	0-1	0-0	1-2-3	2	1	1	0	1	0
CAMPBELLSVILLE UNIV.	12/06/14						DNP						
at Bethel Univ.	12/13/14	*	30	4-10	3-5	0-0	1-4-5	2	0	2	0	0	11
at #8 Martin Methodist	12/17/14	*	34	2-7	1-4	0-0	1-2-3	1	3	3	1	1	5
at #13 Dalton State	12/19/14	*	20	2-7	0-1	0-0	1-2-3	2	0	1	0	0	4
vs. Concordia-Selma	12/20/14	*	23	0-5	0-0	1-2	1-1-2	1	3	1	0	0	1
at Indiana-Southeast	01/03/15		16	1-4	0-1	0-0	0-3-3	4	0	3	0	0	2
at Freed-Hardeman	01/12/15		29	4-8	2-3	2-2	1-1-2	1	1	0	0	0	12

### Career Highs

Points: 19, vs. Martin Methodist (11/24/14)  
 Rebounds: 6, vs. Martin Methodist (11/24/14)  
 FG Made: 7, vs. Martin Methodist (11/24/14)  
 FG Attempts: 14, vs. Martin Methodist (11/24/14)  
 3-FG Made: 3, at Bethel Univ. (12/13/14)  
 3-Pt. FG Att.: 5, at Bethel Univ. (12/13/14)  
 FT Made: 4, vs. Freed-Hardeman (11/17/14)  
 FT Attempts: 6, vs. Martin Methodist (11/24/14)  
 Assists: 4, at Shawnee State (11/22/14)  
 Steals: 3, at Georgetown College (11/20/14)  
 Minutes: 37, vs. Martin Methodist (11/24/14)

#### Miscellaneous

Double Figure Scoring Games . . . . . 5  
 Double Figure Rebound Games . . . . . 0  
 Double-Doubles . . . . . 0  
 Games Led CU in Scoring . . . . . 2  
 Games Led CU in Rebounding . . . . . 1  
 Games With 20+ Points . . . . . 0

### Season Highs

Points: 19, vs. Martin Methodist (11/24/14)  
 Rebounds: 6, vs. Martin Methodist (11/24/14)  
 FG Made: 7, vs. Martin Methodist (11/24/14)  
 FG Attempts: 14, vs. Martin Methodist (11/24/14)  
 3-FG Made: 3, at Bethel Univ. (12/13/14)  
 3-Pt. FG Att.: 5, at Bethel Univ. (12/13/14)  
 FT Made: 4, vs. Freed-Hardeman (11/17/14)  
 FT Attempts: 6, vs. Martin Methodist (11/24/14)  
 Assists: 4, at Shawnee State (11/22/14)  
 Steals: 3, at Georgetown College (11/20/14)  
 Minutes: 37, vs. Martin Methodist (11/24/14)

#### Miscellaneous

Double Figure Scoring Games . . . . . 5  
 Double Figure Rebound Games . . . . . 0  
 Double-Doubles . . . . . 0  
 Games Led CU in Scoring . . . . . 2  
 Games Led CU in Rebounding . . . . . 1  
 Games With 20+ Points . . . . . 0

### T. WILKERSON'S CAREER STATISTICS

Year	GP-GS	Min	Avg	FG-A	Pct	3FG-A	Pct	FT-A	Pct	Off-Def-Tot	Avg	PF-FO	A	TO	Blk	Stl	Pts	Avg
2014-15	16-14	437	27.3	42-125	.336	14-32	.438	16-26	.615	15-36-51	3.2	35-0	21	35	4	11	114	7.1

# #3 Alex Flagler • r-Junior • Guard • Atlanta, Ga.



## Flagler's 2014-15 Game-by-Game

	DATE	GS	MIN	FG-A	3FG-A	FT-A	O-D-T	PF	A	TO	BLK	S	PTS
INDIANA-SOUTHEAST	11/05/14	*	31	5-11	2-5	5-6	0-4-4	4	4	5	0	5	17
at Fisk Univ.	11/06/14	*	16	4-7	1-2	0-0	0-1-1	2	2	4	0	4	9
at Oakwood Univ.	11/08/14	*	19	0-7	0-2	1-4	0-0-0	0	2	3	0	2	1
OAKWOOD UNIV.	11/11/14		19	1-7	0-4	0-3	1-2-3	2	2	4	0	1	2
LIFE UNIV.	11/15/14					DNP							
FREED-HARDEMAN	11/17/14		10	2-3	1-2	0-0	1-0-1	1	2	1	0	0	5
at Georgetown College	11/20/14					DNP							
at Shawnee State	11/22/14		27	3-9	2-6	1-3	0-3-3	2	0	3	0	3	9
MARTIN METHODIST	11/24/14	*	30	2-4	0-1	3-3	3-2-5	0	2	5	0	1	7
ST. CATHARINE COLL.	12/04/14					DNP							
CAMPBELLVILLE UNIV.	12/06/14					DNP							
at Bethel Univ.	12/13/14		6	0-0	0-0	0-0	0-0-0	1	0	0	0	0	0
at Martin Methodist	12/17/14		1	0-1	0-1	0-0	0-1-1	0	0	0	0	0	0
at Dalton State	12/19/14		12	1-5	0-2	0-0	0-3-3	4	1	2	0	2	2
vs. Concordia-Selma	12/20/14		22	1-12	1-6	2-2	0-2-2	0	1	1	0	0	5
at Indiana-Southeast	01/03/15	*	26	5-10	2-3	4-5	0-2-2	2	3	6	0	5	16
at Freed-Hardeman	01/12/15	*	21	4-5	1-2	2-2	0-4-4	5	4	1	0	1	11

## Career Highs

Points: 26, 2x, last vs. Morris College (11/16/13)  
 Rebounds: 8, vs. Morris College (11/16/13)  
 FG Made: 10, vs. Morris College (11/16/13)  
 FG Attempts: 17, vs. Morris College (11/16/13)  
 3-Pt. FG Made: 3, 2x, last vs. Bethel Univ. (12/14/13)  
 3-FG Att.: 7, 2x, last at Campbellsville Univ. (02/01/14)  
 FT Made: 7, vs. Mid-Continent Univ. (11/07/13)  
 FT Attempts: 10, at Oakwood Univ. (11/26/13)  
 Assists: 6, 2x last vs. St. Catharine College (01/02/1)  
 Steals: 5, 2x, last at Indiana-Southeast (01/03/15)  
 Minutes: 33, 2x, last at Campbellsville Univ. (02/01/14)

### Miscellaneous

Double Figure Scoring Games . . . . . 12  
 Double Figure Rebound Games . . . . . 0  
 Double-Doubles . . . . . 0  
 Games Led CU in Scoring . . . . . 5  
 Games Led CU in Rebounding . . . . . 0  
 Games With 20+ Points . . . . . 2

## Season Highs

Points: 17, vs. Indiana-Southeast (11/05/14)  
 Rebounds: 5, vs. Martin Methodist (11/24/14)  
 FG Made: 5, 2x, last at Indiana-Southeast (01/03/15)  
 FG Attempts: 11, vs. Indiana-Southeast (11/05/14)  
 3-FG Made: 2, 3x, last at Indiana-Southeast (01/03/15)  
 3-Pt. FG Att.: 6, 2x, last vs. Concordia-Selma (12/20/14)  
 FT Made: 5, vs. Indiana-Southeast (11/05/14)  
 FT Attempts: 6, vs. Indiana-Southeast (11/05/14)  
 Assists: 4, 2x, last at Freed-Hardeman (01/12/15)  
 Steals: 5, 2x, last at Indiana-Southeast (01/03/15)  
 Minutes: 31, vs. Indiana-Southeast (11/05/14)

### Miscellaneous

Double Figure Scoring Games . . . . . 3  
 Double Figure Rebound Games . . . . . 0  
 Double-Doubles . . . . . 0  
 Games Led CU in Scoring . . . . . 1  
 Games Led CU in Rebounding . . . . . 0  
 Games With 20+ Points . . . . . 0

## FLAGLER'S CAREER STATISTICS

Year	GP-GS	Min	Avg	FG-A	Pct	3FG-A	Pct	FT-A	Pct	Off-Def-Tot	Avg	PF-FO	A	TO	Blk	Stl	Pts	Avg
2013-14	23-5	421	18.3	61-161	.379	25-69	.362	51-80	.638	15-41-56	2.4	38-1	46	55	1	19	198	8.6
2014-15	13-6	240	18.5	28-81	.346	10-36	.278	18-28	.643	5-24-29	2.2	23-1	23	35	0	24	84	6.5
<b>TOTALS</b>	<b>36-11</b>	<b>661</b>	<b>18.4</b>	<b>89-242</b>	<b>.368</b>	<b>35-105</b>	<b>.333</b>	<b>69-108</b>	<b>.639</b>	<b>20-65-85</b>	<b>2.4</b>	<b>61-2</b>	<b>69</b>	<b>90</b>	<b>1</b>	<b>43</b>	<b>282</b>	<b>7.8</b>



# #4 Marquel Hickerson • Sophomore • Guard • Tullahoma, Tenn.



## Hickerson's 2014-15 Game-by-Game

	DATE	GS	MIN	FG-A	3FG-A	FT-A	O-D-T	PF	A	TO	BLK	S	PTS
INDIANA-SOUTHEAST	11/05/14					DNP							
at Fisk Univ.	11/06/14					DNP							
at Oakwood Univ.	11/08/14					DNP							
OAKWOOD UNIV.	11/11/14		14	2-7	1-5	0-0	0-0-0	0	2	1	0	0	5
LIFE UNIVERSITY	11/15/14		21	0-5	0-2	5-6	2-2-4	1	4	2	1	1	5
FREED-HARDEMAN	11/17/14		18	1-5	0-1	1-2	2-2-4	0	3	1	0	0	3
at Georgetown College	11/20/14		19	1-5	0-2	0-0	0-1-1	4	1	2	0	0	2
at Shawnee State	11/22/14					DNP							
MARTIN METHODIST	11/24/14		22	3-9	0-1	2-2	1-4-5	1	1	2	0	1	8
ST. CATHARINE COLL.	12/04/14	*	30	6-13	2-7	8-10	0-2-2	3	2	3	0	4	22
CAMPBELLSVILLE UNIV.	12/06/14	*	18	3-11	2-6	0-0	3-2-5	2	0	2	0	0	8
at Bethel Univ.	12/13/14	*	31	7-12	1-3	1-1	0-4-4	2	1	1	0	3	16
at Martin Methodist	12/17/14	*	31	2-12	0-4	1-2	1-1-2	2	2	1	0	4	5
at Dalton State	12/19/14	*	35	3-9	1-5	2-2	0-3-3	2	1	0	1	3	9
vs. Concordia-Selma	12/20/14	*	18	3-7	0-1	0-0	0-2-2	2	1	2	0	0	6
at Indiana-Southeast	01/03/15					DNP							
at Freed-Hardeman	01/12/15		6	1-3	1-1	0-0	0-0-0	1	0	2	0	1	3

### Career Highs

Points: 29, 2x, last vs. Univ. of Pikeville (02/06/14)  
 Rebounds: 8, 5x, last vs. Univ. of Pikeville (02/06/14)  
 FG Made: 11, vs. Univ. of Pikeville (02/06/14)  
 FG Attempts: 22, vs. Univ. of Pikeville (02/06/14)  
 3-FG Made: 5, 3x, last vs. Univ. of Pikeville (02/06/14)  
 3-Pt. FG Att.: 10, vs. Univ. of Pikeville (02/06/14)  
 FT Made: 8, vs. St. Catharine College (12/04/14)  
 FT Attempts: 10, vs. St. Catharine College (12/04/14)  
 Assists: 5, 2x, last vs. Concordia Univ.-Selma (12/21/13)  
 Steals: 5, vs. Shawnee State (11/23/13)  
 Minutes: 42, vs. Univ. of the Cumberlands (01/25/14)

#### Miscellaneous

Double Figure Scoring Games . . . . . 15  
 Double Figure Rebound Games . . . . . 0  
 Double-Doubles . . . . . 0  
 Games Led CU in Scoring . . . . . 11  
 Games Led CU in Rebounding . . . . . 5  
 Games With 20+ Points . . . . . 7

### Season Highs

Points: 22, vs. St. Catharine College (12/04/14)  
 Rebounds: 5, 2x, last vs. Campbellsville Univ. (12/06/14)  
 FG Made: 7, at Bethel Univ. (12/13/14)  
 FG Attempts: 13, vs. St. Catharine College (12/04/14)  
 3FG Made: 2, 2x, last vs. Campbellsville U. (12/06/14)  
 3-Pt. FG Att.: 7, vs. St. Catharine College (12/04/14)  
 FT Made: 8, vs. St. Catharine College (12/04/14)  
 FT Attempts: 10, vs. St. Catharine College (12/04/14)  
 Assists: 4, vs. Life Univ. (11/15/14)  
 Steals: 4, 2x, last at Martin Methodist (12/17/14)  
 Minutes: 35, at Dalton State College (12/19/14)

#### Miscellaneous

Double Figure Scoring Games . . . . . 2  
 Double Figure Rebound Games . . . . . 0  
 Double-Doubles . . . . . 0  
 Games Led CU in Scoring . . . . . 2  
 Games Led CU in Rebounding . . . . . 0  
 Games With 20+ Points . . . . . 1

### HICKERSON'S CAREER STATISTICS

Year	GP-GS	Min	Avg	FG-A	Pct	3FG-A	Pct	FT-A	Pct	Off-Def-Tot	Avg	PF-FO	A	TO	Blk	Stl	Pts	Avg
2013-14	25-20	732	29.3	112-277	.404	42-113	.372	44-53	.830	19-97-116	4.6	34-0	54	45	2	36	310	12.4
2014-15	12-6	263	21.9	32-98	.327	8-38	.211	20-25	.800	9-23-32	2.7	20-0	18	19	2	17	92	7.7
<b>TOTALS</b>	<b>37-26</b>	<b>995</b>	<b>26.9</b>	<b>144-375</b>	<b>.384</b>	<b>50-151</b>	<b>.331</b>	<b>64-78</b>	<b>.821</b>	<b>28-120-148</b>	<b>4.0</b>	<b>54-0</b>	<b>72</b>	<b>64</b>	<b>4</b>	<b>53</b>	<b>402</b>	<b>10.9</b>

# #5 Josh Wilkerson • Senior • Guard • Memphis, Tenn.



## J. Wilkerson's 2014-15 Game-by-Game

	DATE	GS	MIN	FG-A	3FG-A	FT-A	O-D-T	PF	A	TO	BLK	S	PTS
INDIANA-SOUTHEAST	11/05/14	*	34	4-19	3-9	0-0	2-2-4	1	3	2	0	2	11
at Fisk Univ.	11/06/14	*	27	5-6	1-1	0-0	0-2-2	1	6	2	0	0	11
at Oakwood Univ.	11/08/14	*	24	3-7	0-0	4-4	0-0-0	2	1	3	0	0	10
OAKWOOD UNIV.	11/11/14		17	2-5	1-3	1-2	0-0-0	1	1	1	0	0	6
LIFE UNIVERSITY	11/15/14	*	17	4-9	1-4	1-1	0-0-0	3	2	6	0	2	10
FREED-HARDEMAN	11/17/14	*	36	8-14	2-6	1-1	1-6-7	1	1	1	0	2	19
at Georgetown College	11/20/14	*	36	3-9	0-1	3-4	1-3-4	5	2	3	0	1	9
at Shawnee State	11/22/14	*	34	6-10	3-6	5-6	2-1-3	3	2	1	0	0	20
MARTIN METHODIST	11/24/14	*	29	6-15	3-5	3-4	0-3-3	4	3	1	0	0	18
ST. CATHARINE COLL.	12/04/14	*	33	3-10	0-2	9-10	0-2-2	2	4	4	0	1	15
CAMPBELLSVILLE UNIV.	12/06/14	*	27	3-9	0-2	3-3	0-4-4	0	2	2	0	1	9
at Bethel Univ.	12/13/14	*	31	5-12	0-3	3-5	0-1-1	2	0	2	0	1	13
at Martin Methodist	12/17/14	*	29	3-8	1-4	5-7	0-2-2	4	1	0	0	4	12
at Dalton State	12/19/14	*	34	6-14	3-7	0-0	1-2-3	3	0	2	0	2	15
vs. Concordia-Selma	12/20/14	*	22	4-5	3-3	0-0	0-0-0	3	0	1	0	0	11
at Indiana-Southeast	01/03/15		20	5-8	1-1	6-6	2-2-4	2	2	3	0	1	17
at Freed-Hardeman	01/12/15		26	2-10	2-5	1-3	0-1-1	4	1	3	0	1	7

### Career Highs

Points: 20, 2x, last at Shawnee State (11/22/14)  
 Rebounds: 7, vs. Freed-Hardeman (11/17/14)  
 FG Made: 8, vs. Freed-Hardeman (11/17/14)  
 FG Attempts: 19, vs. Indiana-Southeast (11/05/14)  
 3-FG Made: 3, 5x, last vs. Concordia-Selma (12/20/14)  
 3-Pt. FG Att.: 9, vs. Indiana-Southeast (11/05/14)  
 FT Made: 10, vs. Shawnee State (02/27/14)  
 FT Attempts: 12, vs. Shawnee State (02/27/14)  
 Assists: 6, at Fisk Univ. (11/06/14)  
 Steals: 4, at Martin Methodist (12/17/14)  
 Minutes: 39, vs. Univ. of Cumberlands (01/25/14)

#### Miscellaneous

Double Figure Scoring Games . . . . . 26  
 Double Figure Rebound Games . . . . . 0  
 Double-Doubles . . . . . 0  
 Games Led CU in Scoring . . . . . 11  
 Games Led CU in Rebounding . . . . . 1  
 Games With 20+ Points . . . . . 2

### Season Highs

Points: 20, at Shawnee State (11/22/14)  
 Rebounds: 7, vs. Freed-Hardeman (11/17/14)  
 FG Made: 8, vs. Freed-Hardeman (11/17/14)  
 FG Attempts: 19, vs. Indiana-Southeast (11/05/14)  
 3-FG Made: 3, 5x, last vs. Concordia-Selma (12/20/14)  
 3-Pt. FG Att.: 9, vs. Indiana-Southeast (11/05/14)  
 FT Made: 9, vs. St. Catharine College (12/04/14)  
 FT Attempts: 10, vs. St. Catharine College (12/04/14)  
 Assists: 6, at Fisk Univ. (11/06/14)  
 Steals: 4, at Martin Methodist (12/17/14)  
 Minutes: 36, 2x, last at Georgetown College (11/20/14)

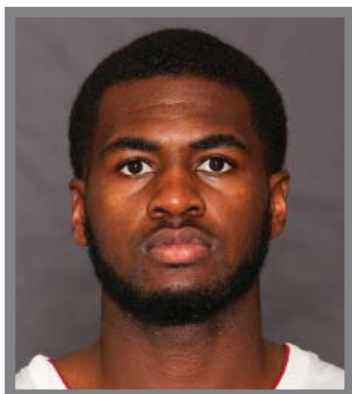
#### Miscellaneous

Double Figure Scoring Games . . . . . 13  
 Double Figure Rebound Games . . . . . 0  
 Double-Doubles . . . . . 0  
 Games Led CU in Scoring . . . . . 6  
 Games Led CU in Rebounding . . . . . 1  
 Games With 20+ Points . . . . . 1

### J. WILKERSON'S CAREER STATISTICS

Year	GP-GS	Min	Avg	FG-A	Pct	3FG-A	Pct	FT-A	Pct	Off-Def-Tot	Avg	PF-FO	A	TO	Blk	Stl	Pts	Avg
2013-14	27-15	680	25.2	97-226	.429	19-67	.284	65-91	.714	15-49-64	2.4	51-1	28	48	1	19	278	10.3
2014-15	17-14	476	28.0	72-170	.424	24-62	.387	45-56	.804	9-31-40	2.4	41-1	31	37	0	18	213	12.5
<b>TOTALS</b>	<b>44-29</b>	<b>1156</b>	<b>26.3</b>	<b>169-396</b>	<b>.427</b>	<b>43-129</b>	<b>.333</b>	<b>110-147</b>	<b>.748</b>	<b>24-80-104</b>	<b>2.4</b>	<b>92-2</b>	<b>59</b>	<b>85</b>	<b>1</b>	<b>37</b>	<b>491</b>	<b>11.2</b>

# #11 Tylor Owens • Junior • Guard • Carbon Hill, Ala..



## Owens' 2014-15 Game-by-Game

	DATE	GS	MIN	FG-A	3FG-A	FT-A	O-D-T	PF	A	TO	BLK	S	PTS
INDIANA-SOUTHEAST	11/05/14		11	0-4	0-1	0-0	1-0-1	3	1	1	0	1	0
at Fisk Univ.	11/06/14		17	1-2	0-0	2-5	0-0-0	3	2	3	0	2	4
at Oakwood Univ.	11/08/14		14	0-5	0-3	2-2	0-1-1	2	4	1	0	1	2
OAKWOOD UNIV.	11/11/14		14	5-8	0-1	1-2	1-2-3	0	0	1	0	2	11
LIFE UNIVERSITY	11/15/14	*	17	1-2	0-0	0-0	0-1-1	4	3	8	0	4	2
FREED-HARDEMAN	11/17/14		20	4-6	3-4	1-1	2-1-3	2	0	3	0	1	12
at Georgetown College	11/20/14		17	1-5	0-1	2-4	1-2-3	3	3	1	0	1	4
at Shawnee State	11/22/14	*	13	1-1	1-1	0-0	1-3-4	2	2	3	0	0	3
MARTIN METHODIST	11/24/14		2	0-0	0-0	0-0	0-0-0	0	0	0	0	0	0
ST. CATHARINE COLL.	12/04/14												DNP
CAMPBELLSVILLE UNIV.	12/06/14												DNP
at Bethel Univ.	12/13/14												DNP
at Martin Methodist	12/17/14												DNP
at Dalton State	12/19/14												DNP
vs. Concordia-Selma	12/20/14												DNP
at Indiana-Southeast	01/03/15												DNP
at Freed-Hardeman	01/12/15												DNP

## Career Highs

Points: 12, vs. Freed-Hardeman (11/17/14)  
 Rebounds: 4, at Shawnee State (11/22/14)  
 FG Made: 5, vs. Oakwood Univ. (11/11/14)  
 FG Attempts: 8, vs. Oakwood Univ. (11/11/14)  
 3-FG Made: 3, vs. Freed-Hardeman (11/17/14)  
 3-Pt. FG Att.: 4, vs. Freed-Hardeman (11/17/14)  
 FT Made: 2, 3x, last at Georgetown College (11/20/14)  
 FT Attempts: 5, at Fisk Univ. (11/06/14)  
 Assists: 4, at Oakwood Univ. (11/08/14)  
 Steals: 4, vs. Life Univ. (11/15/14)  
 Minutes: 20 vs. Freed-Hardeman (11/17/14)

### Miscellaneous

Double Figure Scoring Games . . . . . 0  
 Double Figure Rebound Games . . . . . 0  
 Double-Doubles . . . . . 0  
 Games Led CU in Scoring . . . . . 1  
 Games Led CU in Rebounding . . . . . 0  
 Games With 20+ Points . . . . . 0

## Season Highs

Points: 12, vs. Freed-Hardeman (11/17/14)  
 Rebounds: 4, at Shawnee State (11/22/14)  
 FG Made: 5, vs. Oakwood Univ. (11/11/14)  
 FG Attempts: 8, vs. Oakwood Univ. (11/11/14)  
 3-FG Made: 3, vs. Freed-Hardeman (11/17/14)  
 3-Pt. FG Att.: 4, vs. Freed-Hardeman (11/17/14)  
 FT Made: 2, 3x, last at Georgetown College (11/20/14)  
 FT Attempts: 5, at Fisk Univ. (11/06/14)  
 Assists: 4, at Oakwood Univ. (11/08/14)  
 Steals: 4, vs. Life Univ. (11/15/14)  
 Minutes: 20 vs. Freed-Hardeman (11/17/14)

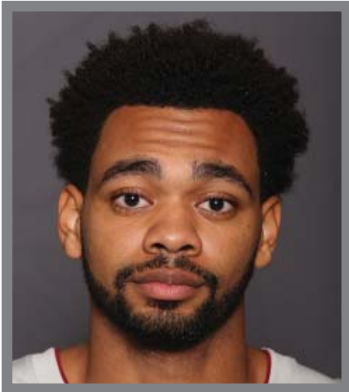
### Miscellaneous

Double Figure Scoring Games . . . . . 0  
 Double Figure Rebound Games . . . . . 0  
 Double-Doubles . . . . . 0  
 Games Led CU in Scoring . . . . . 1  
 Games Led CU in Rebounding . . . . . 0  
 Games With 20+ Points . . . . . 0

## OWENS' CAREER STATISTICS

Year	GP-GS	Min	Avg	FG-A	Pct	3FG-A	Pct	FT-A	Pct	Off-Def-Tot	Avg	PF-FO	A	TO	Blk	Stl	Pts	Avg
2014-15	9-2	125	13.9	13-33	.394	4-11	.364	8-14	.571	6-10-16	1.8	19-0	15	21	0	12	38	4.2

# #12 DeQuan Bond • Sophomore • Guard • Antioch, Tenn.



## Bond's 2014-15 Game-by-Game

	DATE	GS	MIN	FG-A	3FG-A	FT-A	O-D-T	PF	A	TO	BLK	S	PTS
INDIANA-SOUTHEAST	11/05/14		18	1-2	0-0	0-0	3-1-4	4	1	1	1	0	2
at Fisk Univ.	11/06/14		13	0-3	0-1	1-2	2-1-3	2	1	1	0	0	1
at Oakwood Univ.	11/08/14		16	1-3	0-0	0-0	2-3-5	3	0	0	0	0	2
OAKWOOD UNIV.	11/11/14		14	5-5	0-0	0-2	1-2-3	1	2	0	0	0	10
LIFE UNIVERSITY	11/15/14		12	1-1	0-0	0-0	0-1-1	2	0	3	0	1	2
FREED-HARDEMAN	11/17/14		5	0-1	0-0	0-0	0-0-0	0	0	0	0	1	0
at Georgetown College	11/20/14						DNP						
at Shawnee State	11/22/14		6	0-0	0-0	0-0	0-1-1	0	0	0	1	0	0
MARTIN METHODIST	11/24/14		5	0-0	0-0	0-0	0-0-0	1	0	0	0	0	0
ST. CATHARINE COLL.	12/04/14		14	2-5	0-2	2-2	3-1-4	2	0	3	1	1	6
CAMPBELLVILLE UNIV.	12/06/14	*	34	1-5	0-1	0-0	2-4-6	0	0	1	0	0	2
at Bethel Univ.	12/13/14		11	0-2	0-1	0-0	0-1-1	2	1	1	0	0	0
at Martin Methodist	12/17/14		7	3-3	1-1	1-1	0-1-1	1	0	0	0	0	8
at Dalton State	12/19/14		11	3-3	0-0	0-0	1-2-3	1	0	1	0	1	6
vs. Concordia-Selma	12/20/14		20	1-3	0-0	1-1	0-2-2	3	0	0	0	2	3
at Indiana-Southeast	01/03/15	*	27	2-2	0-0	2-2	2-3-5	2	0	2	1	3	6
at Freed-Hardeman	01/12/15	*	22	2-5	0-0	0-0	2-3-5	1	0	2	1	1	4

## Career Highs

Points: 15, at Mid-Continent Univ. (11/26/13)  
 Rebounds: 6, vs. Campbellsville Univ. (12/06/14)  
 FG Made: 6, at Mid-Continent Univ. (11/26/13)  
 FG Attempts: 9, at Mid-Continent Univ. (11/26/13)  
 3-Pt. FG Made: 2, at St. Catharine College (01/30/14)  
 3-FG Att.: 2, 3x, last vs. St. Catharine College (12/04/14)  
 FT Made: 3, 2x, last at St. Catharine College (01/30/14)  
 FT Attempts: 7, vs. Voorhees College (11/15/13)  
 Assists: 2, 3x, last vs. Oakwood Univ. (11/11/14)  
 Steals: 3, at Indiana-Southeast (01/03/15)  
 Minutes: 34, vs. Campbellsville Univ. (12/06/14)

### Miscellaneous

Double Figure Scoring Games . . . . . 2  
 Double Figure Rebound Games . . . . . 0  
 Double-Doubles . . . . . 0  
 Games Led CU in Scoring . . . . . 0  
 Games Led CU in Rebounding . . . . . 0  
 Games With 20+ Points . . . . . 0

## Season Highs

Points: 10, vs. Oakwood Univ. (11/11/14)  
 Rebounds: 6, vs. Campbellsville Univ. (12/06/14)  
 FG Made: 5, vs. Oakwood Univ. (11/11/14)  
 FG Att.: 5, 4x, last at Freed-Hardeman (01/12/15)  
 3-FG Made: 1, at Martin Methodist (12/17/14)  
 3-Pt. FG Att.: 2, vs. St. Catharine College (12/04/14)  
 FT Made: 2, 2x, last at Indiana-Southeast (01/03/15)  
 FT Att.: 2, 4x, last at Indiana-Southeast (01/03/15)  
 Assists: 2, vs. Oakwood Univ. (11/11/14)  
 Steals: 3, at Indiana-Southeast (01/03/15)  
 Minutes: 34, vs. Campbellsville Univ. (12/06/14)

### Miscellaneous

Double Figure Scoring Games . . . . . 0  
 Double Figure Rebound Games . . . . . 0  
 Double-Doubles . . . . . 0  
 Games Led CU in Scoring . . . . . 0  
 Games Led CU in Rebounding . . . . . 0  
 Games With 20+ Points . . . . . 0

## BOND'S CAREER STATISTICS

Year	GP-GS	Min	Avg	FG-A	Pct	3FG-A	Pct	FT-A	Pct	Off-Def-Tot	Avg	PF-FO	A	TO	Blk	Stl	Pts	Avg
2013-14	26-12	382	14.7	32-78	.410	5-14	.357	16-24	.667	26-30-56	2.2	27-0	11	19	5	8	85	3.3
2014-15	16-3	235	14.7	22-43	.512	1-6	.167	7-10	.700	18-26-44	2.8	25-0	5	15	5	10	52	3.3
<b>TOTALS</b>	<b>42-15</b>	<b>617</b>	<b>14.7</b>	<b>54-121</b>	<b>.446</b>	<b>6-20</b>	<b>.300</b>	<b>23-34</b>	<b>.676</b>	<b>44-56-100</b>	<b>2.4</b>	<b>52-0</b>	<b>16</b>	<b>34</b>	<b>10</b>	<b>18</b>	<b>137</b>	<b>3.3</b>

# #14 Cameron Prather • r-Junior • Guard • Nashville, Tenn.



## Prather's 2014-15 Game-by-Game

	DATE	GS	MIN	FG-A	3FG-A	FT-A	O-D-T	PF	A	TO	BLK	S	PTS
INDIANA-SOUTHEAST	11/05/14		4	1-2	0-1	0-0	1-0-1	0	0	0	0	0	2
at Fisk Univ.	11/06/14		5	0-0	0-0	0-0	1-1-2	0	0	1	0	0	0
at Oakwood Univ.	11/08/14		15	3-5	1-2	2-2	1-0-1	0	1	1	0	3	9
OAKWOOD UNIV.	11/11/14	*	19	1-4	0-1	3-3	0-3-3	0	0	1	0	1	5
LIFE UNIVERSITY	11/15/14		18	4-8	2-4	0-0	1-1-2	2	1	1	0	1	10
FREED-HARDEMAN	11/17/14		2	0-1	0-1	0-0	0-0-0	0	0	0	0	0	0
at Georgetown College	11/20/14					DNP							
at Shawnee State	11/22/14		2	0-0	0-0	0-0	0-0-0	0	0	1	0	0	0
MARTIN METHODIST	11/24/14					DNP							
ST. CATHARINE COLL.	12/04/14		12	1-1	0-0	5-5	1-1-2	0	1	0	0	0	7
CAMPBELLVILLE UNIV.	12/06/14		17	5-7	3-4	0-0	1-2-3	1	0	0	0	1	13
at Bethel Univ.	12/13/14					DNP							
at Martin Methodist	12/17/14					DNP							
at Dalton State	12/19/14					DNP							
vs. Concordia-Selma	12/20/14		16	2-3	1-2	0-0	0-1-1	1	1	0	0	1	5
at Indiana-Southeast	01/03/15	*	23	3-7	2-4	1-2	0-3-3	1	2	1	0	2	9
at Freed-Hardeman	01/12/15	*	19	1-4	1-4	2-2	0-1-1	1	0	1	0	1	5

### Career Highs

Points: 13, vs. Campbellsville Univ. (12/06/14)  
 Rebounds: 4, 2x, last vs. Univ. of Pikeville (01/24/13)  
 FG Made: 5, vs. Campbellsville Univ. (12/06/14)  
 FG Attempts: 8, vs. Life Univ. (11/15/14)  
 3-FG Made: 3, vs. Campbellsville Univ. (12/06/14)  
 3FG Att.: 4, 2x, last vs. Campbellsville Univ. (12/06/14)  
 FT Made: 5, vs. St. Catharine College (12/04/14)  
 FT Attempts: 5, vs. St. Catharine College (12/04/14)  
 Assists: 2, 7x, last at Indiana-Southeast (01/03/15)  
 Steals: 3, 3x, last at Oakwood Univ. (11/08/14)  
 Minutes: 23, at Indiana-Southeast (01/03/15)

#### Miscellaneous

Double Figure Scoring Games ..... 3  
 Double Figure Rebound Games. .... 0  
 Double-Doubles ..... 0  
 Games Led CU in Scoring ..... 1  
 Games Led CU in Rebounding. .... 0  
 Games With 20+ Points ..... 0

### Season Highs

Points: 13, vs. Campbellsville Univ. (12/06/14)  
 Rebounds: 3, 2x, last vs. Campbellsville Univ. (12/06/14)  
 FG Made: 5, vs. Campbellsville Univ. (12/06/14)  
 FG Attempts: 8, vs. Life Univ. (11/15/14)  
 3-FG Made: 3, vs. Campbellsville Univ. (12/06/14)  
 3FG Att.: 4, 3x, last at Freed-Hardeman (01/12/15)  
 FT Made: 5, vs. St. Catharine College (12/04/14)  
 FT Attempts: 5, vs. St. Catharine College (12/04/14)  
 Assists: 2, at Indiana-Southeast (01/03/15)  
 Steals: 3, at Oakwood Univ. (11/08/14)  
 Minutes: 23, at Indiana-Southeast (01/03/15)

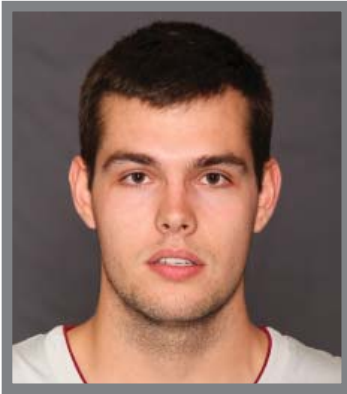
#### Miscellaneous

Double Figure Scoring Games ..... 2  
 Double Figure Rebound Games. .... 0  
 Double-Doubles ..... 0  
 Games Led CU in Scoring ..... 1  
 Games Led CU in Rebounding. .... 0  
 Games With 20+ Points ..... 0

### PRATHER'S CAREER STATISTICS

Year	GP-GS	Min	Avg	FG-A	Pct	3FG-A	Pct	FT-A	Pct	Off-Def-Tot	Avg	PF-FO	A	TO	Blk	Stl	Pts	Avg
2012-13	19-1	161	8.5	12-29	.414	2-8	.250	0-0	.000	10-10-20	1.1	22-0	9	7	0	8	26	1.4
2013-14	15-2	130	8.7	9-27	.333	3-7	.429	6-14	.429	8-7-15	1.0	9-0	10	7	0	8	27	1.8
2014-15	12-3	152	12.7	21-42	.500	10-23	.435	13-14	.929	6-13-19	1.6	6-0	6	7	0	10	65	5.4
<b>TOTALS</b>	<b>46-6</b>	<b>443</b>	<b>9.6</b>	<b>42-98</b>	<b>.429</b>	<b>15-38</b>	<b>.395</b>	<b>19-28</b>	<b>.679</b>	<b>24-30-54</b>	<b>1.2</b>	<b>37-0</b>	<b>25</b>	<b>21</b>	<b>0</b>	<b>26</b>	<b>118</b>	<b>2.6</b>

# #15 Moritz Dern • Senior • Forward • Marburg, Germany



## Dern's 2014-15 Game-by-Game

	DATE	GS	MIN	FG-A	3FG-A	FT-A	O-D-T	PF	A	TO	BLK	S	PTS
INDIANA-SOUTHEAST	11/05/14	*	14	0-2	0-0	3-4	0-1-1	4	0	0	0	0	3
at Fisk Univ.	11/06/14	*	25	2-7	0-0	2-2	1-5-6	3	1	2	1	0	6
at Oakwood Univ.	11/08/14	*	10	0-0	0-0	0-0	0-0-0	0	0	1	0	0	0
OAKWOOD UNIV.	11/11/14		17	0-3	0-1	0-0	2-5-7	2	0	2	0	1	0
LIFE UNIVERSITY	11/15/14		10	1-3	1-1	0-0	2-1-3	1	2	1	0	0	3
FREED-HARDEMAN	11/17/14		20	0-1	0-1	0-0	0-4-4	4	0	1	1	0	0
at Georgetown College	11/20/14		16	2-4	1-3	0-0	1-2-3	3	0	2	1	0	5
at Shawnee State	11/22/14		22	4-4	0-0	0-0	1-3-4	3	0	0	2	0	8
MARTIN METHODIST	11/24/14		19	2-4	0-1	0-0	1-2-3	3	0	2	0	0	4
ST. CATHARINE COLL.	12/04/14		29	2-3	0-0	2-2	0-6-6	5	0	2	1	0	6
CAMPBELLSVILLE UNIV.	12/06/14		23	2-4	1-2	2-2	3-1-4	2	1	1	0	0	7
at Bethel Univ.	12/13/14	*	18	0-1	0-0	0-0	0-2-2	3	0	0	0	0	0
at Martin Methodist	12/17/14	*	26	2-7	1-1	1-2	6-4-10	3	0	4	1	0	6
at Dalton State	12/19/14	*	30	1-7	0-3	1-2	0-3-3	4	0	1	0	1	3
vs. Concordia-Selma	12/20/14	*	8	0-2	0-1	0-0	0-1-1	2	0	1	0	0	0
at Indiana-Southeast	01/03/15		12	0-3	0-2	3-4	0-1-1	2	0	0	0	2	3
at Freed-Hardeman	01/12/15		3	0-0	0-0	0-0	0-0-0	1	0	0	0	0	0

## Career Highs

Points: 18, vs. Morris College (11/16/13)  
 Rebounds: 11, vs. Morris College (11/16/13)  
 FG Made: 6, vs. Morris College (11/16/13)  
 FG Attempts: 15, vs. Morris College (11/16/13)  
 3-FG Made: 2, 2x, last vs. Mid-Continent U. (11/07/13)  
 3-FG Att.: 3, 2x, last at Dalton State (12/19/14)  
 FT Made: 6, vs. Morris College (11/16/13)  
 FT Attempts: 8, vs. Morris College (11/16/13)  
 Assists: 3, vs. Belhaven Univ. (12/20/13)  
 Steals: 3, vs. Mid-Continent Univ. (11/07/13)  
 Minutes: 36, vs. Morris College (11/16/13)

### Miscellaneous

Double Figure Scoring Games . . . . . 5  
 Double Figure Rebound Games . . . . . 1  
 Double-Doubles . . . . . 1  
 Games Led CU in Scoring . . . . . 0  
 Games Led CU in Rebounding . . . . . 6  
 Games With 20+ Points . . . . . 0

## Season Highs

Points: 8, at Shawnee State (11/22/14)  
 Rebounds: 7, vs. Oakwood Univ. (11/11/14)  
 FG Made: 4, at Shawnee State (11/22/14)  
 FG Attempts: 7, 3x, last at Dalton State (12/19/14)  
 3FG Made: 1, 4x, last at Martin Methodist (12/17/14)  
 3-Pt. FG Att.: 3, 2x, last at Dalton State (12/19/14)  
 FT Made: 3, 2x, last at Indiana-Southeast (01/03/15)  
 FT Attempts: 4, 2x, last at Indiana-Southeast (01/03/15)  
 Assists: 2, vs. Life Univ. (11/15/14)  
 Steals: 2, at Indiana-Southeast (01/03/15)  
 Minutes: 30, at Dalton State (12/19/14)

### Miscellaneous

Double Figure Scoring Games . . . . . 0  
 Double Figure Rebound Games . . . . . 0  
 Double-Doubles . . . . . 0  
 Games Led CU in Scoring . . . . . 0  
 Games Led CU in Rebounding . . . . . 2  
 Games With 20+ Points . . . . . 0

## DERN'S CAREER STATISTICS

Year	GP-GS	Min	Avg	FG-A	Pct	3FG-A	Pct	FT-A	Pct	Off-Def-Tot	Avg	PF-FO	A	TO	Blk	Stl	Pts	Avg
2011-12	14-1	95	6.8	13-27	.481	5-7	.714	0-2	.000	4-19-23	1.6	10-0	5	10	1	4	31	2.2
2012-13	12-0	109	9.1	11-30	.367	1-7	.143	2-5	.400	7-12-19	1.6	15-1	0	6	2	2	25	2.1
2013-14	27-12	514	19.0	38-96	.396	9-21	.429	35-44	.795	36-65-101	3.7	56-3	13	25	16	14	120	4.4
2014-15	17-7	302	17.8	18-55	.327	4-16	.250	14-18	.778	17-41-58	3.4	45-1	4	20	7	4	54	3.2
<b>TOTALS</b>	<b>70-20</b>	<b>1020</b>	<b>14.6</b>	<b>80-208</b>	<b>.385</b>	<b>19-51</b>	<b>.373</b>	<b>51-69</b>	<b>.739</b>	<b>64-137-201</b>	<b>2.9</b>	<b>126-5</b>	<b>22</b>	<b>61</b>	<b>26</b>	<b>24</b>	<b>230</b>	<b>3.3</b>

# #20 Jerrod Gaston • Junior • Guard • Murphrysboro, Ill.



## Gaston's 2014-15 Game-by-Game

	DATE	GS	MIN	FG-A	3FG-A	FT-A	O-D-T	PF	A	TO	BLK	S	PTS
INDIANA-SOUTHEAST	11/05/14		20	4-8	1-4	6-7	0-2-2	3	1	3	0	1	15
at Fisk Univ.	11/06/14		17	4-7	0-1	8-8	0-6-6	3	2	4	0	1	16
at Oakwood Univ.	11/08/14		21	5-14	0-2	3-4	1-3-4	3	4	1	0	2	13
OAKWOOD UNIV.	11/11/14	*	12	3-5	0-1	2-2	1-1-2	1	1	0	0	1	8
LIFE UNIVERSITY	11/15/14		25	1-11	0-2	3-4	2-2-4	1	1	2	0	2	5
FREED-HARDEMAN	11/17/14	*	22	4-11	1-6	1-3	2-2-4	2	3	1	1	0	10
at Georgetown College	11/20/14	*	26	1-3	0-1	1-2	0-6-6	2	1	9	0	0	3
at Shawnee State	11/22/14												DNP
MARTIN METHODIST	11/24/14												DNP
ST. CATHARINE COLL.	12/04/14												DNP
CAMPBELLSVILLE UNIV.	12/06/14		4	0-0	0-0	0-0	0-0-0	0	0	2	0	0	0
at Bethel Univ.	12/13/14		20	0-3	0-0	4-4	0-1-1	3	1	1	0	0	4
at Martin Methodist	12/17/14		19	3-4	0-1	2-7	1-2-3	1	0	2	0	0	8
at Dalton State	12/19/14		22	1-9	0-2	3-6	0-1-1	0	1	3	0	1	5
vs. Concordia-Selma	12/20/14		7	0-0	0-0	1-2	0-2-2	0	1	0	0	0	1
at Indiana-Southeast	01/03/15												DNP
at Freed-Hardeman	01/12/15		22	1-5	0-0	2-4	1-1-2	4	3	4	0	1	4

### Career Highs

Points: 16, at Fisk Univ. (11/06/14)  
 Rebounds: 6, 2x, last at Georgetown College (11/20/14)  
 FG Made: 5, at Oakwood Univ. (11/08/14)  
 FG Attempts: 14, at Oakwood Univ. (11/08/14)  
 3-FG Made: 1, 2x, last vs. Freed-Hardeman (11/17/14)  
 3-Pt. FG Att.: 6, vs. Freed-Hardeman (11/17/14)  
 FT Made: 8, at Fisk Univ. (11/06/14)  
 FT Attempts: 8, at Fisk Univ. (11/06/14)  
 Assists: 4, at Oakwood Univ. (11/08/14)  
 Steals: 2, 2x, vs. Life Univ. (11/15/14)  
 Minutes: 26, at Georgetown College (11/20/14)

#### Miscellaneous

Double Figure Scoring Games . . . . . 4  
 Double Figure Rebound Games . . . . . 0  
 Double-Doubles . . . . . 0  
 Games Led CU in Scoring . . . . . 1  
 Games Led CU in Rebounding . . . . . 1  
 Games With 20+ Points . . . . . 0

### Season Highs

Points: 16, at Fisk Univ. (11/06/14)  
 Rebounds: 6, 2x, last at Georgetown College (11/20/14)  
 FG Made: 5, at Oakwood Univ. (11/08/14)  
 FG Attempts: 14, at Oakwood Univ. (11/08/14)  
 3-FG Made: 1, 2x, last vs. Freed-Hardeman (11/17/14)  
 3-Pt. FG Att.: 6, vs. Freed-Hardeman (11/17/14)  
 FT Made: 8, at Fisk Univ. (11/06/14)  
 FT Attempts: 8, at Fisk Univ. (11/06/14)  
 Assists: 4, at Oakwood Univ. (11/08/14)  
 Steals: 2, 2x, vs. Life Univ. (11/15/14)  
 Minutes: 26, at Georgetown College (11/20/14)

#### Miscellaneous

Double Figure Scoring Games . . . . . 4  
 Double Figure Rebound Games . . . . . 0  
 Double-Doubles . . . . . 0  
 Games Led CU in Scoring . . . . . 1  
 Games Led CU in Rebounding . . . . . 1  
 Games With 20+ Points . . . . . 0

### GASTON'S CAREER STATISTICS

Year	GP-GS	Min	Avg	FG-A	Pct	3FG-A	Pct	FT-A	Pct	Off-Def-Tot	Avg	PF-FO	A	TO	Blk	Stl	Pts	Avg
2014-15	13-3	237	18.2	27-80	.338	2-20	.100	36-53	.679	8-29-37	2.8	23-0	19	32	1	9	92	7.1

# #21 Paul Williams • r-Junior • Guard • North Chicago, Ill.



## Williams' 2014-15 Game-by-Game

	DATE	GS	MIN	FG-A	3FG-A	FT-A	O-D-T	PF	A	TO	BLK	S	PTS
INDIANA-SOUTHEAST	11/05/14												DNP
at Fisk Univ.	11/06/14												DNP
at Oakwood Univ.	11/08/14		16	0-4	0-0	5-6	0-1-1	5	1	1	0	0	5
OAKWOOD UNIV.	11/11/14		17	3-8	0-0	1-6	4-2-6	2	1	1	1	3	7
LIFE UNIVERSITY	11/15/14												DNP
FREED-HARDEMAN	11/17/14												DNP
at Georgetown College	11/20/14												DNP
at Shawnee State	11/22/14		14	0-1	0-0	0-0	0-1-1	1	2	1	0	0	0
MARTIN METHODIST	11/24/14		12	0-1	0-0	1-2	0-1-1	1	0	1	1	0	1
ST. CATHARINE COLL.	12/04/14		17	1-5	0-0	0-0	1-2-3	1	0	1	1	2	2
CAMPBELLSVILLE UNIV.	12/06/14		20	2-9	0-0	4-4	3-1-4	1	0	2	1	0	8
at Bethel Univ.	12/13/14		3	0-0	0-0	0-0	0-0-0	1	0	1	0	0	0
at Martin Methodist	12/17/14		11	0-2	0-1	0-0	0-0-0	0	1	1	0	0	0
at Dalton State	12/19/14		2	0-0	0-0	0-0	1-0-1	0	0	1	0	0	0
vs. Concordia-Selma	12/20/14		15	1-4	0-0	2-2	0-2-2	1	0	1	0	0	4
at Indiana-Southeast	01/03/15	*	24	3-8	0-1	4-4	0-6-6	3	0	1	2	2	10
at Freed-Hardeman	01/12/15	*	23	3-6	0-1	5-5	2-4-6	1	1	2	0	1	11

### Career Highs

Points: 11, at Freed-Hardeman (01/12/15)  
 Rebounds: 6, 3x, last at Freed-Hardeman (01/12/15)  
 FG Made: 3, 3x, last at Freed-Hardeman (01/12/15)  
 FG Attempts: 9, vs. Campbellsville Univ. (12/06/14)  
 3-FG Made: 0  
 3-Pt. FG Att.: 1, 3x, last at Freed-Hardeman (01/12/15)  
 FT Made: 5, 2x, last at Freed-Hardeman (01/12/15)  
 FT Attempts: 6, 2x, vs. Oakwood Univ. (11/11/14)  
 Assists: 2, at Shawnee State (11/22/14)  
 Steals: 3, vs. Oakwood Univ. (11/11/14)  
 Minutes: 24, at Indiana-Southeast (01/03/15)

#### Miscellaneous

Double Figure Scoring Games . . . . . 2  
 Double Figure Rebound Games . . . . . 0  
 Double-Doubles . . . . . 0  
 Games Led CU in Scoring . . . . . 0  
 Games Led CU in Rebounding . . . . . 2  
 Games With 20+ Points . . . . . 0

### Season Highs

Points: 11, at Freed-Hardeman (01/12/15)  
 Rebounds: 6, 3x, last at Freed-Hardeman (01/12/15)  
 FG Made: 3, 3x, last at Freed-Hardeman (01/12/15)  
 FG Attempts: 9, vs. Campbellsville Univ. (12/06/14)  
 3-FG Made: 0  
 3-Pt. FG Att.: 1, 3x, last at Freed-Hardeman (01/12/15)  
 FT Made: 5, 2x, last at Freed-Hardeman (01/12/15)  
 FT Attempts: 6, 2x, vs. Oakwood Univ. (11/11/14)  
 Assists: 2, at Shawnee State (11/22/14)  
 Steals: 3, vs. Oakwood Univ. (11/11/14)  
 Minutes: 24, at Indiana-Southeast (01/03/15)

#### Miscellaneous

Double Figure Scoring Games . . . . . 2  
 Double Figure Rebound Games . . . . . 0  
 Double-Doubles . . . . . 0  
 Games Led CU in Scoring . . . . . 0  
 Games Led CU in Rebounding . . . . . 2  
 Games With 20+ Points . . . . . 0

### WILLIAMS' CAREER STATISTICS

Year	GP-GS	Min	Avg	FG-A	Pct	3FG-A	Pct	FT-A	Pct	Off-Def-Tot	Avg	PF-FO	A	TO	Blk	Stl	Pts	Avg
2014-15	12-2	174	14.5	13-48	.271	0-3	.000	22-29	.759	11-20-31	2.6	17-1	6	14	6	8	48	4.0



# #23 Uros Benacek • Sophomore • Center • Maribor, Slovenia



## Benacek's 2014-15 Game-by-Game

	DATE	GS	MIN	FG-A	3FG-A	FT-A	O-D-T	PF	A	TO	BLK	S	PTS
INDIANA-SOUTHEAST	11/05/14		12	5-6	0-1	1-2	2-0-2	0	0	0	0	0	11
at Fisk Univ.	11/06/14		22	6-7	2-2	0-1	3-7-10	1	0	3	2	1	14
at Oakwood Univ.	11/08/14		18	2-4	0-1	1-2	0-0-0	0	0	0	0	0	5
OAKWOOD UNIV.	11/11/14	*	13	1-2	1-1	2-2	0-6-6	0	0	1	1	0	5
LIFE UNIVERSITY	11/15/14	*	17	2-4	0-1	1-1	0-0-0	2	0	1	0	0	5
FREED-HARDEMAN	11/17/14	*	8	1-2	1-1	0-0	0-0-0	0	0	0	0	0	3
at Georgetown College	11/20/14	*	14	1-2	1-1	0-0	0-4-4	2	1	2	1	0	3
at Shawnee State	11/22/14	*	14	3-6	0-2	0-0	0-1-1	0	0	0	0	0	6
MARTIN METHODIST	11/24/14	*	19	2-4	1-1	0-0	0-3-3	1	0	0	0	0	5
ST. CATHARINE COLL.	12/04/14	*	10	2-4	1-1	0-0	1-0-1	3	0	0	1	0	5
CAMPBELLSVILLE UNIV.	12/06/14	*	17	3-6	1-2	3-3	1-0-1	0	2	0	0	0	10
at Bethel Univ.	12/13/14		19	2-2	2-2	0-0	0-3-3	1	0	1	1	0	6
at Martin Methodist	12/17/14		7	0-1	0-0	0-0	0-0-0	0	0	1	0	0	0
at Dalton State	12/19/14		11	0-0	0-0	0-0	0-0-0	0	0	0	0	0	0
vs. Concordia-Selma	12/20/14		22	2-8	1-4	0-0	3-2-5	2	0	2	0	1	5
at Indiana-Southeast	01/03/15	*	23	1-3	0-1	1-1	0-0-0	1	1	2	0	1	3
at Freed-Hardeman	01/12/15	*	9	0-3	0-1	0-0	2-0-2	0	0	0	0	1	0

### Career Highs

Points: 14, at Fisk Univ. (11/06/14)  
 Rebounds: 10, at Fisk Univ. (11/06/14)  
 FG Made: 6, at Fisk Univ. (11/06/14)  
 FG Attempts: 8, vs. Concordia-Selma (12/20/14)  
 3-FG Made: 2, 2x, last at Bethel Univ. (12/13/14)  
 3-Pt. FG Att.: 4, vs. Concordia-Selma (12/20/14)  
 FT Made: 3, vs. Campbellsville Univ. (12/06/14)  
 FT Attempts: 3, vs. Campbellsville Univ. (12/06/14)  
 Assists: 2, vs. Campbellsville Univ. (12/06/14)  
 Steals: 1, 3x, last vs. Indiana-Southeast (01/03/15)  
 Minutes: 23, vs. Indiana-Southeast (01/03/15)

#### Miscellaneous

Double Figure Scoring Games . . . . . 3  
 Double Figure Rebound Games . . . . . 0  
 Double-Doubles . . . . . 0  
 Games Led CU in Scoring . . . . . 0  
 Games Led CU in Rebounding . . . . . 2  
 Games With 20+ Points . . . . . 0

### Season Highs

Points: 14, at Fisk Univ. (11/06/14)  
 Rebounds: 10, at Fisk Univ. (11/06/14)  
 FG Made: 6, at Fisk Univ. (11/06/14)  
 FG Attempts: 8, vs. Concordia-Selma (12/20/14)  
 3-FG Made: 2, 2x, last at Bethel Univ. (12/13/14)  
 3-Pt. FG Att.: 4, vs. Concordia-Selma (12/20/14)  
 FT Made: 3, vs. Campbellsville Univ. (12/06/14)  
 FT Attempts: 3, vs. Campbellsville Univ. (12/06/14)  
 Assists: 2, vs. Campbellsville Univ. (12/06/14)  
 Steals: 1, 4x, last at Freed-Hardeman (01/12/15)  
 Minutes: 23, vs. Indiana-Southeast (01/03/15)

#### Miscellaneous

Double Figure Scoring Games . . . . . 3  
 Double Figure Rebound Games . . . . . 0  
 Double-Doubles . . . . . 0  
 Games Led CU in Scoring . . . . . 0  
 Games Led CU in Rebounding . . . . . 2  
 Games With 20+ Points . . . . . 0

### BENACEK'S CAREER STATISTICS

Year	GP-GS	Min	Avg	FG-A	Pct	3FG-A	Pct	FT-A	Pct	Off-Def-Tot	Avg	PF-FO	A	TO	Blk	Stl	Pts	Avg
2014-15	17-10	255	15.0	33-64	.516	11-22	.500	9-12	.750	12-26-38	2.2	13-0	4	13	6	4	86	5.1

# #24 DeMario Frazier • Senior • Forward • Murfreesboro, Tenn.



## Frazier's Game-by-Game

	DATE	GS	MIN	FG-A	3FG-A	FT-A	O-D-T	PF	A	TO	BLK	S	PTS
INDIANA-SOUTHEAST	11/05/14	*	30	5-6	0-0	2-5	5-7-12	2	0	1	0	2	12
at Fisk Univ.	11/06/14	*	30	6-7	0-0	0-2	2-5-7	2	2	3	1	1	12
at Oakwood Univ.	11/08/14	*	25	7-11	0-0	1-1	5-6-11	4	1	5	0	2	15
OAKWOOD UNIV.	11/11/14	*	18	2-4	0-0	1-3	1-3-4	1	2	0	0	1	5
LIFE UNIVERSITY	11/15/14	*	27	9-10	0-0	4-7	2-4-6	2	1	1	0	1	22
FREED-HARDEMAN	11/17/14	*	26	2-3	0-0	2-2	2-3-5	3	0	3	0	0	6
at Georgetown College	11/20/14	*	38	8-11	0-0	2-3	1-4-5	2	0	1	0	0	18
at Shawnee State	11/22/14	*	35	1-2	1-1	2-4	0-7-7	1	2	1	0	1	5
MARTIN METHODIST	11/24/14	*	25	1-2	0-0	0-0	1-8-9	4	2	1	0	0	2
ST. CATHARINE COLL.	12/04/14	*	34	4-6	0-0	3-5	2-6-8	3	1	1	0	2	11
CAMPBELLSVILLE UNIV.	12/06/14	*	29	1-4	0-0	0-0	0-7-7	2	3	1	0	0	2
at Bethel Univ.	12/13/14	*	30	5-8	0-0	1-1	1-4-5	1	1	1	0	0	11
at Martin Methodist	12/17/14	*	34	3-7	0-0	2-4	3-4-7	1	0	3	0	1	8
at Dalton State	12/19/14	*	22	1-5	0-0	1-2	2-4-6	3	1	2	0	0	3
vs. Concordia-Selma	12/20/14	*	16	1-4	0-0	5-6	1-4-5	2	0	0	0	1	7
at Indiana-Southeast	01/03/15		18	1-2	0-0	1-1	2-2-4	0	0	1	1	0	3
at Freed-Hardeman	01/12/15		13	1-2	0-0	0-0	2-2-4	1	0	0	0	2	2

## Career Highs

Points: 22, vs. Life Univ. (11/15/14)  
 Rebounds: 12, vs. Indiana-Southeast (11/05/14)  
 FG Made: 9, vs. Life Univ. (11/15/14)  
 FG Att.: 11, 2x, last at Georgetown College (11/20/14)  
 3-FG Made: 1, at Shawnee State (11/22/14)  
 3-Pt. FG Att.: 1, at Shawnee State (11/22/14)  
 FT Made: 5, vs. Concordia-Selma (12/20/14)  
 FT Attempts: 7, vs. Life Univ. (11/15/14)  
 Assists: 3, vs. Campbellsville Univ. (12/06/14)  
 Steals: 2, 3x, last at Oakwood Univ. (11/08/14)  
 Minutes: 38, at Georgetown College (11/20/14)

### Miscellaneous

Double Figure Scoring Games . . . . . 8  
 Double Figure Rebound Games . . . . . 1  
 Double-Doubles . . . . . 1  
 Games Led CU in Scoring . . . . . 3  
 Games Led CU in Rebounding . . . . . 13  
 Games With 20+ Points . . . . . 1

## Season Highs

Points: 22, vs. Life Univ. (11/15/14)  
 Rebounds: 12, vs. Indiana-Southeast (11/05/14)  
 FG Made: 9, vs. Life Univ. (11/15/14)  
 FG Att.: 11, 2x, last at Georgetown College (11/20/14)  
 3-FG Made: 1, at Shawnee State (11/22/14)  
 3-Pt. FG Att.: 1, at Shawnee State (11/22/14)  
 FT Made: 5, vs. Concordia-Selma (12/20/14)  
 FT Attempts: 7, vs. Life Univ. (11/15/14)  
 Assists: 3, vs. Campbellsville Univ. (12/06/14)  
 Steals: 2, 4x, last at Freed-Hardeman (01/12/15)  
 Minutes: 38, at Georgetown College (11/20/14)

### Miscellaneous

Double Figure Scoring Games . . . . . 7  
 Double Figure Rebound Games . . . . . 1  
 Double-Doubles . . . . . 1  
 Games Led CU in Scoring . . . . . 3  
 Games Led CU in Rebounding . . . . . 10  
 Games With 20+ Points . . . . . 1

## FRAZIER'S CAREER STATISTICS

Year	GP-GS	Min	Avg	FG-A	Pct	3FG-A	Pct	FT-A	Pct	Off-Def-Tot	Avg	PF-FO	A	TO	Blk	Stl	Pts	Avg
2013-14	18-1	209	11.6	27-46	.587	0-0	.000	9-19	.474	15-39-54	3.0	26-0	5	14	4	4	63	3.5
2014-15	17-15	450	26.5	58-94	.617	1-1	1.000	27-46	.587	32-80-112	6.6	34-0	16	25	2	14	144	8.5
<b>TOTALS</b>	<b>35-16</b>	<b>659</b>	<b>18.8</b>	<b>85-140</b>	<b>.607</b>	<b>1-1</b>	<b>1.000</b>	<b>36-65</b>	<b>.554</b>	<b>47-119-166</b>	<b>4.7</b>	<b>60-0</b>	<b>21</b>	<b>39</b>	<b>6</b>	<b>18</b>	<b>207</b>	<b>5.9</b>



**2014-15 Cumberland Basketball**  
**Cumberland Univ. Season Box Score (as of Jan 14, 2015)**  
**All games**



<b>RECORD:</b>	<b>OVERALL</b>	<b>HOME</b>	<b>AWAY</b>	<b>NEUTRAL</b>
ALL GAMES	6-11	2-5	4-5	0-1
CONFERENCE	2-3	1-2	1-1	0-0
NON-CONFERENCE	4-8	1-3	3-4	0-1

##	Player	gp-gs	min	avg	Total		3-Point		F-Throw		Rebounds					pf	dq	a	to	blk	stl	pts	avg
					fg-fga	fg%	3fg-fga	3fg%	ft-fa	ft%	off	def	tot	avg									
05	Wilkerson, Josh	17-14	476	28.0	72-170	.424	24-62	.387	45-56	.804	9	31	40	2.4	41	1	31	37	0	18	213	12.5	
24	Frazier, DeMario	17-15	450	26.5	58-94	.617	1-1	1.000	27-46	.587	32	80	112	6.6	34	0	16	25	2	14	144	8.5	
04	Hickerson, Marquel	12-6	263	21.9	32-98	.327	8-38	.211	20-25	.800	9	23	32	2.7	20	0	18	19	2	17	92	7.7	
02	Wilkerson, Telvin	16-14	437	27.3	42-125	.336	14-32	.438	16-26	.615	15	36	51	3.2	35	0	21	35	4	11	114	7.1	
20	Gaston, Jerrod	13-3	237	18.2	27-80	.338	2-20	.100	36-53	.679	8	29	37	2.8	23	0	19	32	1	9	92	7.1	
03	Flagler, Alex	13-6	240	18.5	28-81	.346	10-36	.278	18-28	.643	5	24	29	2.2	23	1	23	35	0	24	84	6.5	
14	Prather, Cameron	12-3	152	12.7	21-42	.500	10-23	.435	13-14	.929	6	13	19	1.6	6	0	6	7	0	10	65	5.4	
23	Benacek, Uros	17-10	255	15.0	33-64	.516	11-22	.500	9-12	.750	12	26	38	2.2	13	0	4	13	6	4	86	5.1	
11	Owens, Tylor	9-2	125	13.9	13-33	.394	4-11	.364	8-14	.571	6	10	16	1.8	19	0	15	21	0	12	38	4.2	
21	Williams, Paul	12-2	174	14.5	13-48	.271	0-3	.000	22-29	.759	11	20	31	2.6	17	1	6	14	6	8	48	4.0	
12	Bond, DeQuan	16-3	235	14.7	22-43	.512	1-6	.167	7-10	.700	18	26	44	2.8	25	0	5	15	5	10	52	3.3	
15	Dern, Moritz	17-7	302	17.8	18-55	.327	4-16	.250	14-18	.778	17	41	58	3.4	45	1	4	20	7	4	54	3.2	
01	Kirkland, Garrett	6-0	53	8.8	2-8	.250	0-2	.000	0-0	.000	3	5	8	1.3	3	0	2	4	0	0	4	0.7	
Team											38	55	93				5						
Total.....		17	3399		381-941	.405	89-272	.327	235-331	.710	189	419	608	35.8	304	4	170	282	33	143	1086	63.9	
Opponents.....		17	3402		422-959	.440	96-319	.301	204-292	.699	185	433	618	36.4	278	-	193	268	62	133	1144	67.3	

<b>Score by Periods</b>	<b>1st</b>	<b>2nd</b>	<b>Totals</b>
Cumberland Univ.	518	570	1088
Opponents	513	631	1144



**2014-15 Cumberland Basketball**  
 Cumberland Univ. Season Schedule/Results & Leaders (as of Jan 14, 2015)  
**All games**



<b>RECORD:</b>	<b>OVERALL</b>	<b>HOME</b>	<b>AWAY</b>	<b>NEUTRAL</b>
ALL GAMES	6-11	2-5	4-5	0-1
CONFERENCE	2-3	1-2	1-1	0-0
NON-CONFERENCE	4-8	1-3	3-4	0-1

<b>Date</b>	<b>Opponent</b>	<b>Score</b>	<b>Att.</b>	<b>High Points</b>	<b>High Rebounds</b>
11/05/14	INDIANA U-SOUTHEAST	80-92 L		(17)Flagler, Alex	(12)Frazier, DeMario
11/06/14	at Fisk Univ.	W 83-70		(16)Gaston, Jerrod	(10)Benacek, Uros
11/08/14	at Oakwood Univ.	W 66-64		(15)Frazier, DeMario	(11)Frazier, DeMario
11/11/14	OAKWOOD UNIV.	W 74-63		(11)Owens, Tylor	(7)Dern, Moritz
11/15/14	*LIFE UNIVERSITY	70-87 L		(22)Frazier, DeMario	(6)Frazier, DeMario
11/17/14	FREED-HARDEMAN	66-81 L		(19)Wilkerson, Josh	(7)Wilkerson, Josh
11/20/14	*at #8 Georgetown College	54-74 L		(18)Frazier, DeMario	(6)Gaston, Jerrod
11/22/14	*at Shawnee State	W 60-58		(20)Wilkerson, Josh	(7)Frazier, DeMario
11/24/14	MARTIN METHODIST	64-66 L		(19)Wilkerson, Telvin	(9)Frazier, DeMario
12/04/14	*ST. CATHARINE COLL.	W 74-68		(22)Hickerson, Marquel	(8)Frazier, DeMario
12/06/14	*CAMPBELLSVILLE UNIV.	59-73 L		(13)Prather, Cameron	(7)Frazier, DeMario
12/13/14	at Bethel Univ.	63-65 L		(16)Hickerson, Marquel	(5)Frazier, DeMario
				(5)Wilkerson, Telvin	
12/17/14	at #8 Martin Methodist	52-59 L	204	(12)Wilkerson, Josh	(10)Dern, Moritz
12/19/14	at #13 Dalton State	47-53 L		(15)Wilkerson, Josh	(6)Frazier, DeMario
12/20/14	vs Concordia Univ.-Selma	48-51 L		(11)Wilkerson, Josh	(5)Benacek, Uros
				(5)Frazier, DeMario	
01/03/15	at Indiana-Southeast	W 69-53	239	(17)Wilkerson, Josh	(6)Williams, Paul
01/12/15	at Freed Hardeman Univ.	59-67 L		(12)Wilkerson, Telvin	(6)Williams, Paul

\* - Conference game

<b>Attendance Summary</b>	<b>Games</b>	<b>Attend</b>	<b>Avg/Game</b>
Home	7	0	0
Away	9	443	49
Neutral	1	0	0
Total	17	443	26



**2014-15 Cumberland Basketball**  
 Cumberland Univ. Combined Team Statistics (as of Jan 14, 2015)  
**All games**



<b>RECORD:</b>	<b>OVERALL</b>	<b>HOME</b>	<b>AWAY</b>	<b>NEUTRAL</b>
ALL GAMES	6-11	2-5	4-5	0-1
CONFERENCE	2-3	1-2	1-1	0-0
NON-CONFERENCE	4-8	1-3	3-4	0-1

#	Player	gp-gs	min	avg	Total		3-Point		F-Throw		Rebounds			pf	dq	a	to	blk	stl	pts	avg	
					fg-fga	fg%	3fg-fga	3fg%	ft-fa	ft%	off	def	tot									
05	Wilkerson, Josh	17-14	476	28.0	72-170	.424	24-62	.387	45-56	.804	9	31	40	2.4	41	1	31	37	0	18	213	12.5
24	Frazier, DeMario	17-15	450	26.5	58-94	.617	1-1	1.000	27-46	.587	32	80	112	6.6	34	0	16	25	2	14	144	8.5
04	Hickerson, Marquel	12-6	263	21.9	32-98	.327	8-38	.211	20-25	.800	9	23	32	2.7	20	0	18	19	2	17	92	7.7
02	Wilkerson, Telvin	16-14	437	27.3	42-125	.336	14-32	.438	16-26	.615	15	36	51	3.2	35	0	21	35	4	11	114	7.1
20	Gaston, Jerrod	13-3	237	18.2	27-80	.338	2-20	.100	36-53	.679	8	29	37	2.8	23	0	19	32	1	9	92	7.1
03	Flagler, Alex	13-6	240	18.5	28-81	.346	10-36	.278	18-28	.643	5	24	29	2.2	23	1	23	35	0	24	84	6.5
14	Prather, Cameron	12-3	152	12.7	21-42	.500	10-23	.435	13-14	.929	6	13	19	1.6	6	0	6	7	0	10	65	5.4
23	Benacek, Uros	17-10	255	15.0	33-64	.516	11-22	.500	9-12	.750	12	26	38	2.2	13	0	4	13	6	4	86	5.1
11	Owens, Tylor	9-2	125	13.9	13-33	.394	4-11	.364	8-14	.571	6	10	16	1.8	19	0	15	21	0	12	38	4.2
21	Williams, Paul	12-2	174	14.5	13-48	.271	0-3	.000	22-29	.759	11	20	31	2.6	17	1	6	14	6	8	48	4.0
12	Bond, DeQuan	16-3	235	14.7	22-43	.512	1-6	.167	7-10	.700	18	26	44	2.8	25	0	5	15	5	10	52	3.3
15	Dern, Moritz	17-7	302	17.8	18-55	.327	4-16	.250	14-18	.778	17	41	58	3.4	45	1	4	20	7	4	54	3.2
01	Kirkland, Garrett	6-0	53	8.8	2-8	.250	0-2	.000	0-0	.000	3	5	8	1.3	3	0	2	4	0	0	4	0.7
Team											38	55	93				5					
Total.....		17	3399		381-941	.405	89-272	.327	235-331	.710	189	419	608	35.8	304	4	170	282	33	143	1086	63.9
Opponents.....		17	3402		422-959	.440	96-319	.301	204-292	.699	185	433	618	36.4	278	-	193	268	62	133	1144	67.3

<b>TEAM STATISTICS</b>	<b>CU-M</b>	<b>OPP</b>	<b>Date</b>	<b>Opponent</b>	<b>Score</b>	<b>Att.</b>
SCORING	1086	1144	11/05/14	INDIANA U-SOUTHEAST	L 80-92	0
Points per game	63.9	67.3	11/06/14	at Fisk Univ.	w 83-70	0
Scoring margin	-3.4	-	11/08/14	at Oakwood Univ.	w 66-64	0
FIELD GOALS-ATT	381-941	422-959	11/11/14	OAKWOOD UNIV.	w 74-63	0
Field goal pct	.405	.440	* 11/15/14	LIFE UNIVERSITY	L 70-87	0
3 POINT FG-ATT	89-272	96-319	11/17/14	FREED-HARDEMAN	L 66-81	0
3-point FG pct	.327	.301	* 11/20/14	at #8 Georgetown College	L 54-74	0
3-pt FG made per game	5.2	5.6	* 11/22/14	at Shawnee State	w 60-58	0
FREE THROWS-ATT	235-331	204-292	11/24/14	MARTIN METHODIST	L 64-66	0
Free throw pct	.710	.699	* 12/04/14	ST. CATHARINE COLL.	w 74-68	0
F-Throws made per game	13.8	12.0	* 12/06/14	CAMPBELLSVILLE UNIV.	L 59-73	0
REBOUNDS	608	618	12/13/14	at Bethel Univ.	L 63-65	0
Rebounds per game	35.8	36.4	12/17/14	at #8 Martin Methodist	L 52-59	204
Rebounding margin	-0.6	-	12/19/14	at #13 Dalton State	L 47-53	0
ASSISTS	170	193	12/20/14	vs Concordia Univ.-Selma	L 48-51	0
Assists per game	10.0	11.4	01/03/15	at Indiana-Southeast	w 69-53	239
TURNOVERS	282	268	01/12/15	at Freed Hardeman Univ.	L 59-67	0
Turnovers per game	16.6	15.8				
Turnover margin	-0.8	-				
Assist/turnover ratio	0.6	0.7				
STEALS	143	133				
Steals per game	8.4	7.8				
BLOCKS	33	62				
Blocks per game	1.9	3.6				
ATTENDANCE	0	443				
Home games-Avg/Game	7-0	9-49				
Neutral site-Avg/Game	-	1-0				

\* - Conference game

<b>Score by Periods</b>	<b>1st</b>	<b>2nd</b>	<b>Totals</b>
Cumberland Univ.	518	570	1088
Opponents	513	631	1144



**2014-15 Cumberland Basketball**  
 Cumberland Univ. Team Game-by-Game (as of Jan 14, 2015)  
**All games**



TEAM STATISTICS

Opponent	Date	Score	L	Total		3-Pointers		Free throws		Rebounds				pf	a	t/o	blk	stl	pts	avg
				fg-fga	pct	3fg-fga	pct	ft-fta	pct	off	def	tot	avg							
INDIANA U-SOUTHEAST	11/05/14	80-92	L	27-69	.391	7-22	.318	19-28	.679	18	19	37	37.0	24	12	14	2	12	80	80.0
at Fisk Univ.	11/06/14	83-70	W	32-57	.561	5-9	.556	14-22	.636	14	31	45	41.0	19	18	28	4	10	83	81.5
at Oakwood Univ.	11/08/14	66-64	W	22-63	.349	1-11	.091	21-27	.778	20	36	56	46.0	23	14	17	1	10	66	76.3
OAKWOOD UNIV.	11/11/14	74-63	W	29-66	.439	4-19	.211	12-26	.462	16	29	45	45.8	13	12	18	2	10	74	75.8
LIFE UNIVERSITY	11/15/14	70-87	L	26-60	.433	4-15	.267	14-19	.737	12	17	29	42.4	20	15	25	1	13	70	74.6
FREED-HARDEMAN	11/17/14	66-81	L	24-56	.429	8-23	.348	10-13	.769	15	20	35	41.2	17	10	16	3	5	66	73.2
at #8 Georgetown College	11/20/14	54-74	L	21-49	.429	4-12	.333	8-15	.533	6	26	32	39.9	22	8	24	2	5	54	70.4
at Shawnee State	11/22/14	60-58	W	22-44	.500	8-19	.421	8-14	.571	5	21	26	38.1	12	12	12	3	4	60	69.1
MARTIN METHODIST	11/24/14	64-66	L	23-53	.434	6-12	.500	12-17	.706	8	27	35	37.8	19	11	14	1	4	64	68.6
ST. CATHARINE COLL.	12/04/14	74-68	W	21-52	.404	3-13	.231	29-34	.853	13	25	38	37.8	21	9	15	4	11	74	69.1
CAMPBELLSVILLE UNIV.	12/06/14	59-73	L	20-57	.351	7-17	.412	12-12	1.000	14	26	40	38.0	8	8	13	1	2	59	68.2
at Bethel Univ.	12/13/14	63-65	L	23-50	.460	6-14	.429	9-11	.818	5	21	26	37.0	18	4	10	1	6	61	67.6
at #8 Martin Methodist	12/17/14	52-59	L	18-52	.346	4-17	.235	12-23	.522	12	21	33	36.7	13	7	15	2	10	52	66.4
at #13 Dalton State	12/19/14	47-53	L	18-59	.305	4-20	.200	7-12	.583	6	31	37	36.7	19	4	13	1	10	47	65.0
vs Concordia Univ.-Selma	12/20/14	48-51	L	15-54	.278	6-17	.353	12-15	.800	5	29	34	36.5	18	8	12	0	5	48	63.9
at Indiana-Southeast	01/03/15	69-53	W	21-47	.447	5-13	.385	22-25	.880	8	23	31	36.2	17	8	21	4	16	69	64.2
at Freed Hardeman Univ.	01/12/15	59-67	L	19-53	.358	7-19	.368	14-18	.778	12	17	29	35.8	21	10	15	1	10	59	63.9
Cumberland Univ.		1086		381-941	.405	89-272	.327	235-331	.710	189	419	608	35.8	304	170	282	33	143	1086	63.9
Opponents		1144		422-959	.440	96-319	.301	204-292	.699	185	433	618	36.4	278	193	268	62	133	1144	67.3

Games played: 17  
 Points/game: 63.9  
 FG Pct: 40.5  
 3FG Pct: 32.7  
 FT Pct: 71.0

Rebounds/game: 35.8  
 Assists/game: 10.0  
 Turnovers/game: 16.6  
 Assist/turnover ratio: 0.6  
 Steals/game: 8.4  
 Blocks/game: 1.9



**2014-15 Cumberland Basketball**  
**Cumberland Univ. Season Box Score (as of Jan 14, 2015)**  
**Conference games**



<b>RECORD:</b>	<b>OVERALL</b>	<b>HOME</b>	<b>AWAY</b>	<b>NEUTRAL</b>
ALL GAMES	2-3	1-2	1-1	0-0
CONFERENCE	2-3	1-2	1-1	0-0
NON-CONFERENCE	0-0	0-0	0-0	0-0

#	Player	gp-gs	min	avg	Total		3-Point		F-Throw		Rebounds				pf	dq	a	to	blk	stl	pts	avg
					fg-fga	fg%	3fg-fga	3fg%	ft-fa	ft%	off	def	tot	avg								
05	Wilkerson, Josh	5-5	147	29.4	19-47	.404	4-15	.267	21-24	.875	3	10	13	2.6	13	1	12	16	0	5	63	12.6
24	Frazier, DeMario	5-5	163	32.6	23-33	.697	1-1	1.000	11-19	.579	5	28	33	6.6	10	0	7	5	0	4	58	11.6
04	Hickerson, Marquel	4-2	88	22.0	10-34	.294	4-17	.235	13-16	.813	5	7	12	3.0	10	0	7	9	1	5	37	9.3
03	Flagler, Alex	1-0	27	27.0	3-9	.333	2-6	.333	1-3	.333	0	3	3	3.0	2	0	0	3	0	3	9	9.0
14	Prather, Cameron	4-0	49	12.3	10-16	.625	5-8	.625	5-5	1.000	3	4	7	1.8	3	0	2	2	0	2	30	7.5
15	Dern, Moritz	5-0	100	20.0	11-18	.611	3-6	.500	4-4	1.000	7	13	20	4.0	14	1	3	6	4	0	29	5.8
23	Benacek, Uros	5-5	72	14.4	11-22	.500	3-7	.429	4-4	1.000	2	5	7	1.4	7	0	3	3	2	0	29	5.8
02	Wilkerson, Telvin	4-4	123	30.8	10-32	.313	3-8	.375	0-3	.000	4	6	10	2.5	4	0	5	7	0	5	23	5.8
21	Williams, Paul	3-0	51	17.0	3-15	.200	0-0	.000	4-4	1.000	4	4	8	2.7	3	0	2	4	2	2	10	3.3
11	Owens, Tylor	3-2	47	15.7	3-8	.375	1-2	.500	2-4	.500	2	6	8	2.7	9	0	8	12	0	5	9	3.0
20	Gaston, Jerrod	3-1	55	18.3	2-14	.143	0-3	.000	4-6	.667	2	8	10	3.3	3	0	2	13	0	2	8	2.7
12	Bond, DeQuan	4-1	66	16.5	4-11	.364	0-3	.000	2-2	1.000	5	7	12	3.0	4	0	0	7	2	2	10	2.5
01	Kirkland, Garrett	2-0	14	7.0	1-3	.333	0-0	.000	0-0	.000	0	4	4	2.0	1	0	1	1	0	0	2	1.0
Team											8	10	18				1					
Total.....		5	1002		110-262	.420	26-76	.342	71-94	.755	50	115	165	33.0	83	2	52	89	11	35	317	63.4
Opponents.....		5	1001		134-282	.475	37-102	.363	55-71	.775	44	117	161	32.2	83	-	65	74	18	39	360	72.0

<b>Score by Periods</b>	<b>1st</b>	<b>2nd</b>	<b>Totals</b>
Cumberland Univ.	146	171	317
Opponents	152	208	360